

## Anuran larvae diet from agroecosystem's ponds: environmental quality and implications for their populations

Selene BABINI,<sup>1,2\*</sup> Luciana CIBILS MARTINA,<sup>2,3</sup> Elisa LUQUE,<sup>3</sup> Noemi GARI,<sup>3</sup> Nancy SALAS,<sup>1</sup> Adolfo L. MARTINO<sup>1</sup>

<sup>1</sup>Ecología, Departamento de Ciencias Naturales, Facultad de Ciencias Exactas, Físico-Químicas y Naturales, Universidad Nacional de Río Cuarto, Ruta Nacional N° 36 - km 601, Río Cuarto, Córdoba; <sup>2</sup>Consejo Nacional de Investigaciones Científicas y Técnicas (CONICET), Buenos Aires; <sup>3</sup>Botánica Sistemática, Departamento de Ciencias Naturales, Facultad de Ciencias Exactas, Físico-Químicas y Naturales, Universidad Nacional de Río Cuarto, Ruta Nacional N° 36 - km 601, Río Cuarto, Córdoba, Argentina

\*Corresponding author: sbabini@exa.unrc.edu.ar

### ABSTRACT

Agriculture is considered an important factor for the decline of amphibians recorded in the last decades. Intensive agriculture requires the application of great amounts of pesticides and fertilizers, consequently many aquatic habitats have been altered. The over-enrichment of waters with nutrients from agriculture causes growth of algae and cyanobacteria and the shift of the community composition toward the dominance of tolerant taxa. The aim of this study was to analyze the diet of tadpoles and the size of larvae and metamorphs of the native species *Rhinella arenarum* in agroecosystems of central Argentina. Four sampling sites with different degree of human disturbance were selected, three temporary ponds from agroecosystems (A1, A2, A3), and a pond in a semi-modified landscape, not affected by agriculture or cattle. The sites were visited once a week from October 2013 to January 2014. Tadpoles and metamorphs were captured, anesthetize and preserved. Morphometric parameters were measured on tadpoles and metamorphs and for 20 tadpoles the complete intestine was removed and their contents analyzed. Phosphate values were higher in agroecosystem ponds. Body size and mass of tadpoles and metamorphs were different between sites, being smaller in agricultural ponds. Diet analysis revealed that all larvae mainly consumed microalgae. Larval diets allowed differentiating the sites, larvae from A1 and A3 sites showed a diet with a similar composition and structure (with a predominance of *Nitzschia palea*), meanwhile larvae from A2 and SM showed different diets. In SM, the larvae mainly consumed *Trachelomonas* sp. Analysis of structural variables revealed a higher algal abundance in the diet of larvae from A3, a lower richness in SM and that there were no differences between sites in diversity and evenness of diets. Our hypothesis was support in part, given that resistant algae taxa were found in agroecosystem ponds and tadpoles and metamorphs were smaller, but larval diets showed higher abundance and richness. The analysis of the diet of aquatic stages of *R. arenarum* allowed us to know the trophic availability and environmental quality of temporary ponds from agroecosystems.

**Key words:** *Rhinella arenarum*; bioindicator; algae; diatoms; tadpoles; metamorphs.

Received: February 2016. Accepted: October 2016.

### INTRODUCTION

Amphibian populations are experiencing worldwide declines (Collins and Crump, 2009). Agriculture is considered an important factor for the decline of amphibians recorded in the last decades (Collins and Crump, 2009). The 89% of the amphibian anuran species are affected by agriculture (GAA, 2004; Young *et al.*, 2004).

The conversion of forest to agricultural land is occurring at rapid rates in many Neotropical areas (Pengue, 2004). The central region of Argentina has been greatly affected by agricultural expansion (Rossi, 2006). Agriculture is intensive and it requires the application of great amounts of pesticides and fertilizers, consequently many aquatic habitats in this area have been altered (CASAFE, 1999; Lajmanovich *et al.*, 2005).

Farming and livestock alter the geomorphology of the aquatic and terrestrial environment and modify the hy-

droperiod, water quality, vegetation cover, productivity of the environment and food webs (Knutson *et al.*, 2004; Nori *et al.*, 2013). Likewise, the chemical products used in farming activities can contaminate water bodies through leaching, causing damages to the aquatic environments (Knutson *et al.*, 2004, Rimet and Bouchez 2011). High concentrations of elements such as phosphorous and nitrogen have been detected in agricultural areas (Hamer *et al.*, 2004). These nutrients cause the eutrophication of the aquatic systems with a drastic decrease of dissolved oxygen and the further death of aerobic organisms (Mitsch and Gosselink, 2000). Moreover, the nutrient availability is one of the most relevant factors that modulate the dynamics of algal communities (Rosemond *et al.* 1993, Tank and Dodds 2003). The over-enrichment of waters with nutrients from agriculture causes growth of algae and cyanobacteria (Correll, 1998; Sabater *et al.* 2000, 2003) and the shift of the community composition

toward the dominance of tolerant taxa (Whitton and Kelly, 1995; Stevenson and Pan, 1999).

The quality of aquatic environments may influence both time at metamorphosis of tadpoles and the size of metamorphs. In addition, may reduce survival and increase predation pressure (Carey and Bryant, 1995; Altig *et al.*, 2007). Recent evidence has revealed that the deterioration of agricultural ponds might modify the trophic availability, affecting the development and growth of tadpoles that are sustained by such environments (Bionda *et al.*, 2012; 2013). Impacts on the early stages of development negatively affect the recruitment of metamorphs (Schmutzer *et al.*, 2008; Burton *et al.*, 2009) and the populations' size (Heyer, 1974; Wilbur, 1980).

To assess the quality of the environment and how it changes over time several bioindicators can be used, including biological processes, species, or communities (Holt and Miller, 2011). Studies on amphibian larvae diet can be a general measure of supply and trophic availability of different habitats. The diet of anuran tadpoles is usually diverse, composed of plant fragments, protozoa, rotifers, anuran eggs, and other tadpoles. However, most tadpoles are primarily herbivorous, consuming a wide variety of algal taxa (Kupferberg, 1997; Altig *et al.*, 2007). Diatoms are one of the most common taxa of algae in the diet of tadpoles (Bionda *et al.*, 2012). Diatoms are widely used to monitor river organic pollution and eutrophication because they are sensitive to water chemistry, especially ionic content, pH, dissolved organic matter, and nutrients (Potapova and Charles 2007; Gómez and Licursi, 2001). In this way the diet of these organisms may constitute a bioindicator for characterization and monitoring of environmental quality (Blanco *et al.*, 2004; Bionda *et al.*, 2013).

The aim of this study was to analyze the diet of tadpoles and the size of larvae and metamorphs of the native species *Rhinella arenarum* (Hensel, 1867), that inhabit in ponds from agroecosystems from the central region of Argentina. This anuran species has a wide Neotropical distribution and provide a suitable and useful model for biomonitoring aquatic ecosystems (Vera Candioti *et al.*, 2010). The study of the diet of aquatic stages of *R. arenarum* allows us to know the trophic availability and environmental quality of temporary ponds from agroecosystems with different anthropogenic alteration degrees. The study of the diet of aquatic stages of *R. arenarum* can also help us to infer its implication on the size of tadpoles and metamorphs, feature that affects the survival of organisms and regulates the populations of frogs (Kupferberg *et al.*, 1994).

We hypothesized that agriculture affects trophic availability to tadpoles, therefore affecting body size, so we expected larval diets in agricultural ponds to be less abundant and diverse, with algal species resistant to pollution, and smaller tadpoles and metamorphs.

## METHODS

### Study area and sampling sites

The study region belongs to the Pampa Plains of central Argentina. The main socio-economic activities of this area are farming and livestock. Moderately undulating plains and a temperate climate characterize the area. Annual average rainfall ranges between 700 and 800 mm and the maximum rainfall occurs between October and March. Annual mean temperature is 18°C ranging between a mean of 23°C in January and 6°C in July (Bridarolli and di Tada, 1996; PEGRC, 2011; Gatica *et al.*, 2012).

Four sampling sites with different degree of human disturbance were selected. Three sites corresponded to temporary ponds from agroecosystems: A1 (33°05'51" S, 64°26'02" W; 471 m asl), rural landscape with a pond near to the crop (about 50 meters) used by cattle to drink water; A2 (33°06'09" S, 64°25'32" W, 467 m asl), rural landscape with pond close to the crop (about 60 meters) and not used by cattle; A3 (33°05'39" S, 64°25'58" W, 468 m asl), rural environment with pond away from the crop (about 900 meters) and used by cattle to drink water. The other site was a semi-modified landscape used as a reference site, not affected by agriculture or cattle: SM (33°06'42 S, 64°18'12 W, 428 m asl) in a protected natural area, the native forest 'El Espinal', located within the National University of Río Cuarto. Ponds of all study sites are temporary and have no fishes. Native species such as *Rhinella arenarum* are known to use these ponds for reproduction and unhealthy tadpoles were found in these sites (Babini *et al.*, 2015a, 2015b, 2016).

### Bioindicator species

Amphibians possess several characteristics that may make them more sensitive to environmental disturbances than other wildlife (Rowe *et al.*, 2003; Hopkins, 2007). Moreover, their aquatic-terrestrial life cycle places them in *doublejeopardy* because a disturbance to the quality or availability of either habitat can disrupt their life cycle and affect populations (Dunson *et al.*, 1992). We selected the native species *R. arenarum* (Hensel, 1867), because its sensitivity as bioindicator was demonstrated in several studies (Howe *et al.*, 1998; Venturino *et al.*, 2003; Bosch *et al.*, 2011; Lajmanovich *et al.*, 2014). This anuran species has a wide Neotropical distribution (Frost, 2014) and it is commonly found in forests, wetlands, riversides, urban and agricultural lands. Tadpoles of *R. arenarum* are black and they have benthic habits (Ceí, 1980; Echeverría *et al.*, 1987; Gallardo, 1987).

### Field work

Field work was carried out from October 2013 to January 2014. The sites were visited once a week. The Visual

Encounter Survey (VES) methodology was used for the sampling of individuals. VES consists in walking around the borders of the pond to observe tadpoles and metamorphs. Individuals were captured, anesthetized with a solution at 0.5% of MS 222 or Methanesulfonate Salt (3-Aminobenzoic Acid Ethyl Ester, Sigma-Aldrich, St. Louis, MO, USA) and preserved in Phosphate Buffer for further analysis. Samples of water and riparian macrophytes were taken at each site in order to analyze the algal availability for tadpoles.

The environmental variables that were surveyed at each site per week were: water and air temperature (at 100 cm from the ground), pH, conductivity, total dissolved solids (TDS) and salinity of water bodies using a digital multiparameter 35-series 35425-10 test (Oakton Instruments, Vernon Hills, IL, USA). Water quality analyses were performed to water samples from study sites. These analyses were carried out by the area of Hydrology, Department of Geology, National University of Río Cuarto, according to the standard methods of APHA-AWWA-WEF (1998). Carbonates and bicarbonates were measured by potentiometric titration with Thermo Orion-selective electrode; sulfates were measured by turbidimetry (with centrifugal Macrotronic); chloride was measured by colorimetric titration with silver nitrate; calcium and magnesium were measured by colorimetric titration with EDTA; sodium and potassium were measured by flame photometry (315 Metrolab digital photometer); arsenic was measured with ICP-MS and fluoride by ion selective electrode (Orion-Thermo). Nitrates are determined by potentiometry with ion selective electrode (Orion Model 9307) reference electrode and Orion potentiometer 710 A. To calibrate the potentiometer 6 benchmarks (5, 10, 25, 50, 100 and 300 mg/L  $\text{NO}_3^-$ ) were used. The detection limit of the determination of  $\text{NO}_3^-$  is 0.2 mg  $\text{L}^{-1}$  and the analytical error of the measurements is 0.5%.

### Laboratory analysis

Morphometric parameters measured on tadpoles and metamorphs were: development stage (following Gosner, 1960); mass by means of a Mettler balance (P11N 0-1000 g); total length (TL; length from the snout to the end of the tail on tadpoles and snout-vent length on metamorphs); maximum width (MW; maximum width of the body, dorsal view); tail muscle height (TMH; tail muscle height bundle the vent tube, lateral view, only on tadpoles). For a total of 20 tadpoles (5 per site) in stages 38-40 of Gosner (1960), the complete intestine was removed and their contents analyzed (only first third). The food items were determined under a Zeiss optical microscope at 40X, according to the technique described by Hill *et al.* (2000). Items were identified to the genus level. The algal density estimate was based on quantitative samples, following Villafañe and Reid (1995).

### Data analysis

Normality and homogeneity of variance was assessed by Kolmogorov-Smirnov and Levene tests, respectively, using different software packages according to the analysis: InfoStat/P ver. 1.1 (Di Rienzo *et al.*, 2012) and Statistica (StatSoft, 2001). Mass of tadpoles and metamorphs was regressed on total length and the residuals were taken as an index of body condition (BC) of individuals (Wood and Richardson, 2009; Pollo *et al.*, 2016). Then, BC and morphometric measures of tadpoles were analyzed by analysis of covariance (ANCOVA). Larval stage is the covariate due to the fact that the stage has an influence on the body size of tadpoles linearly (Babini *et al.*, 2015a). Morphometric measures of metamorphs were analyzed by ANOVA (all individuals were in stage 45 of Gosner). The Di Rienzo, Casanoves and Guzmán (DCG) *post-hoc* test was used. This test for mean comparison (Di Rienzo *et al.*, 2002) utilizes the multivariate technique of cluster analysis (average chain or UPGMA) on a distance matrix obtained from the sample means (Balzarini *et al.*, 2008).

To analyze the composition of larval diets the percentage frequency of occurrence (FO%, percentage of individuals that consumed a given category of prey) and numerical frequencies (N%) for each food item were calculated. In order to compare the composition of larval diets between sites an analysis of similarities (ANOSIM) were performed. ANOSIM is analogous to univariate ANOVA and compare between-group and within-group variation. The statistic (R) is based on rank dissimilarities. R is scaled to be within the range +1 to -1 (Quinn and Keough, 2002). This analysis was performed in R version 3.0.1, using vegan library (Oksanen *et al.*, 2013; R Core Team, 2013). Structural attributes of the algal community in the larval diets of the different sites were calculated: total abundance, richness, Shannon's ( $H'$ ) diversity index and evenness ( $J'$ ), and compared by Kruskal Wallis using InfoStat/P ver. 1.1 (Di Rienzo *et al.*, 2012). Rank-abundance curves were constructed to analyze and show graphically the dominance of certain genera, and whether these relationships changed between sites. Principal Component Analysis (PCA) was performed for water parameters of ponds using InfoStat/P version 1.1 (Di Rienzo *et al.*, 2012). Given that all the variables have different units they were standardized before plotting the PCA. The correlation matrix indicates high correlation (correlation coefficient: 0.99) between conductivity and salinity and TDS, so these two variables were removed from the PCA. Canonical correspondence analysis (CCA) between the water parameters with highest positive and negative weights of CP1 and CP2 and the abundant taxa ( $P_i > 1\%$ ) registered in larval diets was performed. The CCA was performed with Canoco for Windows 4.5 program and the TRIPLLOT was performed with Canodraw for Windows program (terBraak and Smilauer, 2002).

## RESULTS

Regarding the morphometry of tadpoles, the analysis of covariance (Tab. 1) showed a significant positive linear relation ( $P < 0.05$ ; regression coefficients  $> 0.0$ ) between the larval stage and the morphometric variables (except for maximum width –MW–;  $P = 0.5634$ ). The analysis showed significant differences ( $P < 0.05$ ) among sites for total length (TL), tail muscle height (TMH), weight and body condition (BC). In A2, tadpoles with lower TL and TMH were recorded. The lowest mean weight was in A1 and A2 sites and the lowest BC was in A1 (DCG test; Tab. 1). In relation to the metamorphs (Tab. 2), ANOVAs showed differences for all variables. In A1 and A3 sites, the individuals with lower TL and weight were recorded. In A3, the metamorphic individuals had the lowest MW. Body condition of metamorphs was lower in A1 (DCG test; Tab. 2).

Diet analysis revealed that all larvae mainly consumed microalgae. A total of 52 taxa were registered, 52% corresponding to division Ochrophyta (diatoms), 21% Chlorophyta, 10% Charophyta, 10% Cyanobacteria and 8% Euglenozoa (Supplementary Tab. 1). Analysis of structural variables revealed a higher algal abundance in the diet of larvae from A3 ( $F = 8.23$ ,  $P = 0.04$ ), a lower richness in SM ( $F = 9.21$ ,  $P = 0.02$ ) and that there were no differences between sites in diversity and evenness of diets ( $P > 0.05$ ).

The analysis of algae taxa registered in larval diets allowed differentiating the sites (ANOSIM statistic  $R = 0.51$ ,  $P = 0.001$ ). Larvae from A1 and A3 sites showed a diet with a similar composition and structure, meanwhile larvae

from A2 and SM showed different diets. Rank-abundance curves show that *Nitzschia palea* was predominant in the diet of larvae from A1 and A3 agroecosystems, with a relative abundance of 47% and 63% respectively (Fig. 1). In A2 *Microspora* sp. was predominant in the diet, with a relative abundance above 50%. In the semi-modified site SM, the larvae mainly consumed *Trachelomonas* with a relative abundance of 30%.

The water parameters from the studied sites are shown in Tab 3. The A1 had the higher values of conductivity, salinity and TDS. Phosphate values were higher in agroecosystem ponds. Nitrate was detected only in A1 and A2 sites. Collinearity was detected between conductivity, salinity and TDS, so salinity and TDS were removed from the analysis. Parameters carbonate, bicarbonate, chloride, calcium, nitrate and phosphate had the highest positive and negative weights of CP1 and CP2 (Tab. 3) and were included in Canonical Correspondence Analysis (CCA). The first factorial plane collects 89% of the total inertia of CCA, well sufficient to summarize the information on the relationship between water parameters and the abundant taxa ( $P_i > 1\%$ ) registered in larval diets. The CCA indicated that the accumulated inertia of ratio in the first axis was of 55%. The TRIPLLOT shows that the first axis separates the SM and A1 sites of the A3 and A2 sites, while the second axis separates the A1 of the SM and the A3 of the A2, placing each site in a different quartile (Fig. 2). The SM site was associated with *Melosira*, filamentous *Cyanophyceae*, *Trachelomonas* and *Eunotia*, and this site had inverse relation with nitrate, phosphate and carbonate. The A2 site

**Tab. 1.** Analysis of the covariance for tadpoles (stages 34 to 39) and DGC *post-hoc* test.

Variable	F-value	P-value	P-value Cov: stage	Regression coefficients	<i>Post-hoc</i> test
TL	$F_{4,54}: 16.9$	$< 0.0001^*$	$< 0.0001^*$	0.88	A2 < A1, A3, SM
MW	$F_{4,54}: 0.92$	0.4618	0.5634		
TMH	$F_{4,23}: 5.72$	0.0024*	0.024*	0.05	A2 < A3, A1, SM
Weight	$F_{4,23}: 20.3$	$< 0.0001^*$	$< 0.0001^*$	0.03	A1, A2 < A3, SM
BC	$F_{4,23}: 5.07$	0.0044*	0.0016*	0.01	A1 < A2, A3, SM

\*Significant P-value. A1, A2 and A3, agroecosystems; SM, semi-modified site; TL, total length; MW, maximum width; TMH, tail muscle height; BC, body condition.

**Tab. 2.** Analysis of the variance for metamorphosed (stage 45) and DGC *post-hoc* test.

Variable	F-value	P-value	<i>Post-hoc</i> test
TL	$F_{3,56}: 12.8$	$< 0.0001^*$	A1, A3 < A2, SM
MW	$F_{3,56}: 8.1$	$< 0.0001^*$	A3 < A1, A2 < SM
Weight	$F_{3,56}: 21.7$	$< 0.0001^*$	A1, A3 < A2, SM
BC	$F_{3,56}: 3.92$	$< 0.013^*$	A1 < A3, A2, SM

\*Significant P-value. A1, A2 and A3, agroecosystems; SM, semi-modified site; TL, total length; MW, maximum width; BC, body condition.

had relation to nitrate and was associated with *Ulothrix*, *Oedogonium*, *Microspora*, *Encyonema* and *Scenedesmus*. The A1 was closely associated with *Diatoma* and had the highest conductivity. This site along with the A3 were associated with *Cyclotella*, *Gyrosigma*, *Navicula*, *Nitzschia*, *Pinnularia* and *Gomphonema*; and these sites had relation to bicarbonate, chloride, carbonate and phosphate.

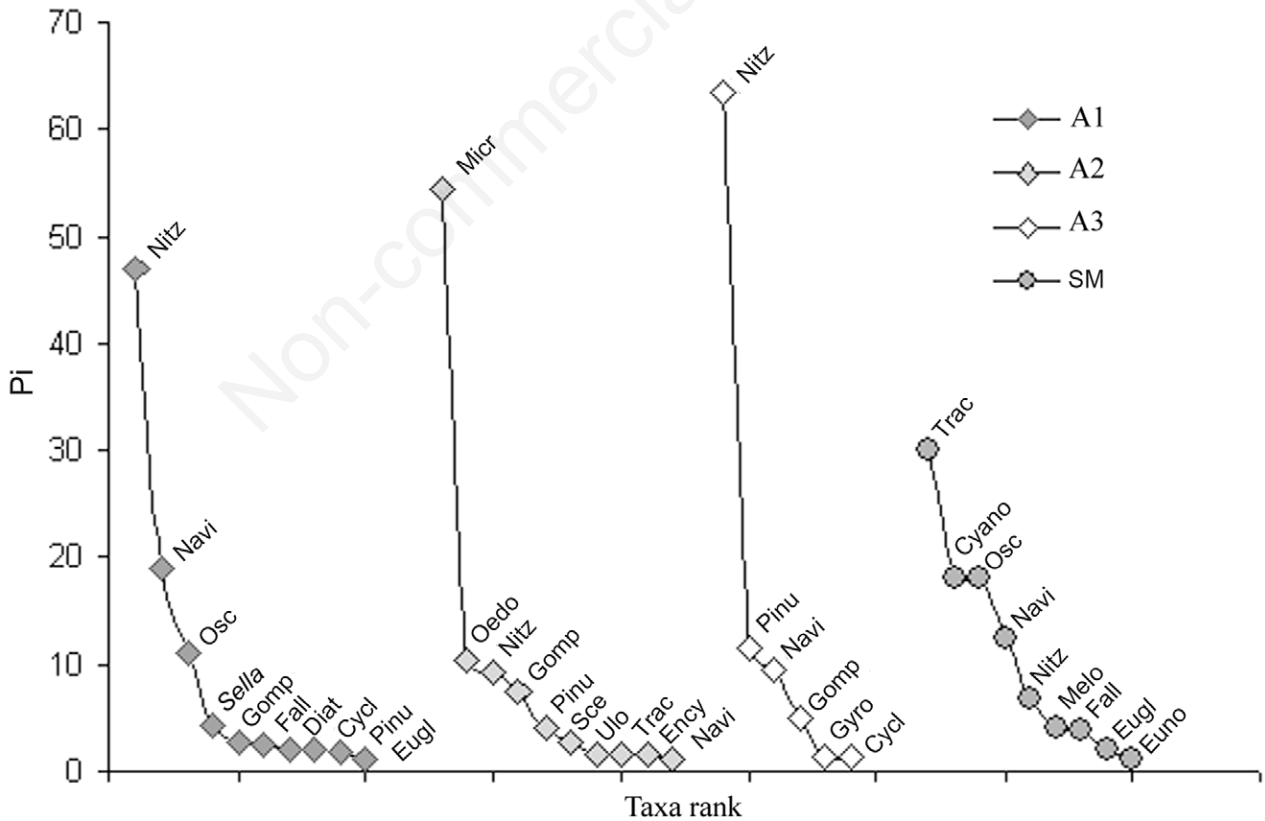
Analysis of algae in water samples showed some differences with diet composition (Supplementary Tab. 2). In water samples of site A1 *Nitzschia palea* was dominant, in concordance with diet composition, but in the site A2 *Sphaerocystis* sp. was abundant in water and it was not registered in diet of larvae of that site. In the water samples of A3 a genus of order Chroococcales was predominant, but it was not consumed by larvae. In samples from SM *Melosira varians* was predominant, but *Trachelomonas* was the most consumed.

Algae found exclusively in tadpole's gut and in pond water from a single site are highlighted (by underlining> in Supplementary Tab. 2. In the site A2 seven algal taxa were found that were not recorded in the other sites: *Kirch-*

*neriella* sp., *Ulothrix* sp., *Pleurotaenium* sp., *Spirogyra* sp., *Staurastrum* sp., *Anabaena* sp. and *Coelosphaerium* sp. In the site A1 two exclusive taxa were found: *Caloneis* sp. and *Arthrospira* sp.; and in the site A3 one alga exclusive was registered: *Diploneis* sp.

**DISCUSSION**

Amphibian larvae may be at greater risk than adults from the effects of contaminants, since water bodies receive runoff from agricultural lands, and also receive direct aerial fumigation (Lajmanovich, 2000). In ponds with bad conditions for the development of tadpoles, the metamorphosis is accelerated and individuals have smaller body sizes, which impacts the survival of populations (Kupferberg *et al.*, 1994). The analysis of the diet of aquatic stages of *R. arenarum* allowed us to know the trophic availability and environmental quality of temporary ponds from agroecosystems. Our results support our hypothesis in part, given that resistant algae taxa were



**Fig. 1.** Rank-abundance curves of abundant taxa ( $P_i > 1\%$ ) registered in larval diets from agroecosystems (A1, A2 and A3) and a semi-modified landscape (SM). Cyano, Cyanophyceae filamentous; Cycl, *Cyclotella*; Diat, *Diatoma*; Ency, *Encyonema*; Eugl, *Euglena*; Euno, *Eunotia*; Fall, *Fallacia*; Gomp, *Gomphonema*; Gyro, *Gyrosigma*, Melo, *Melosira*; Micr, *Microspora*; Navi, *Navicula*; Nitz, *Nitzschia*; Oedo, *Oedogonium*; Osc, *Oscillatoria*; Pinu, *Pinnularia*; Sc, *Scenedesmus*; Sella, *Sellaphora*; Trac, *Trachelomonas*; Ulo, *Ulothrix*.

found in agroecosystem ponds and tadpoles and metamorphs were smaller, but larval diets showed higher abundance and richness.

Based on gut analyses of tadpoles in well mixed algal pond environments (Farlowe, 1928; Jenssen, 1967; Heyer, 1972, 1976; Nathan and James, 1972; Seale, 1980; Diaz-Paniagua, 1985; Loschenkohl, 1986), laboratory feeding trials on suspended particles (Wassersug, 1972; Seale and Beckvar, 1980), and on the morphological adaptations associated with suspension feeding (Wassersug, 1975), tadpoles have been considered indiscriminate feeders. About this, in anuran larvae, diet is usually indicative of the quality of food resources in their environments (Lajmanovich, 2000; Rossa Feres *et al.*, 2004).

The analysis of composition and structure of larval diets allowed differentiating the sites, although there were no differences in diversity and evenness. This could be due to algal communities have a wide range of sensitivity to chemicals. The input of organic matter and agrochemical to water bodies can damage certain species of algae (Relyea, 2009) while favour resistant algae taxa (Mugni, 2008). This could explain the abundance, richness and diversity high of algal taxa in agroecosystems.

However, composition and structure of larval diets allowed differentiating the agroecosystems of SM site. Pres-

ence of some algae registered in the diet of the larvae from agroecosystems may be indicative of altered environments. Diatoms are useful bioindicators of water conditions (Tison *et al.*, 2008). Several species of diatoms are associated with the presence of certain nutrients such as nitrogen or phosphorus (Blanco *et al.*, 2004); which are the main components of many of the agrochemicals used by farmers. In the three agroecosystems was found in a proportion higher than 1% *Gomphonema parvulum* that is usually found associated to environments with high levels of pollution and high levels of phosphorus (Díaz Quirós and Rivera Rondón, 2004). This is consistent with the highest levels of phosphates recorded in the three agroecosystems. Besides, *G. parvulum* has been reported as resistant to heavy metals, which can be associated with agricultural fertilization (Ivorra *et al.*, 2002; Duong *et al.*, 2008; Roberts, 2014). Also, tadpoles collected in sites A1 and A3 showed diets with similar composition and structure, meanwhile the agroecosystem site A2 differed. This could be explained by the absence of livestock in A2. *Nitzschia palea* was the more abundant species in tadpoles' diet from A1 and A3. This alga is particularly found in environments with organic pollution with high conductivity, salinity and nitrate (Nather Khan, 1990; Ramírez and Plata-Díaz, 2008; Yucra and Tapia, 2008) as was

**Tab. 3.** Summary of water analysis of ponds and first two components of principal component analysis (PCA). The highest positive and negative weights of CP1 and CP2 are highlighted in bold.

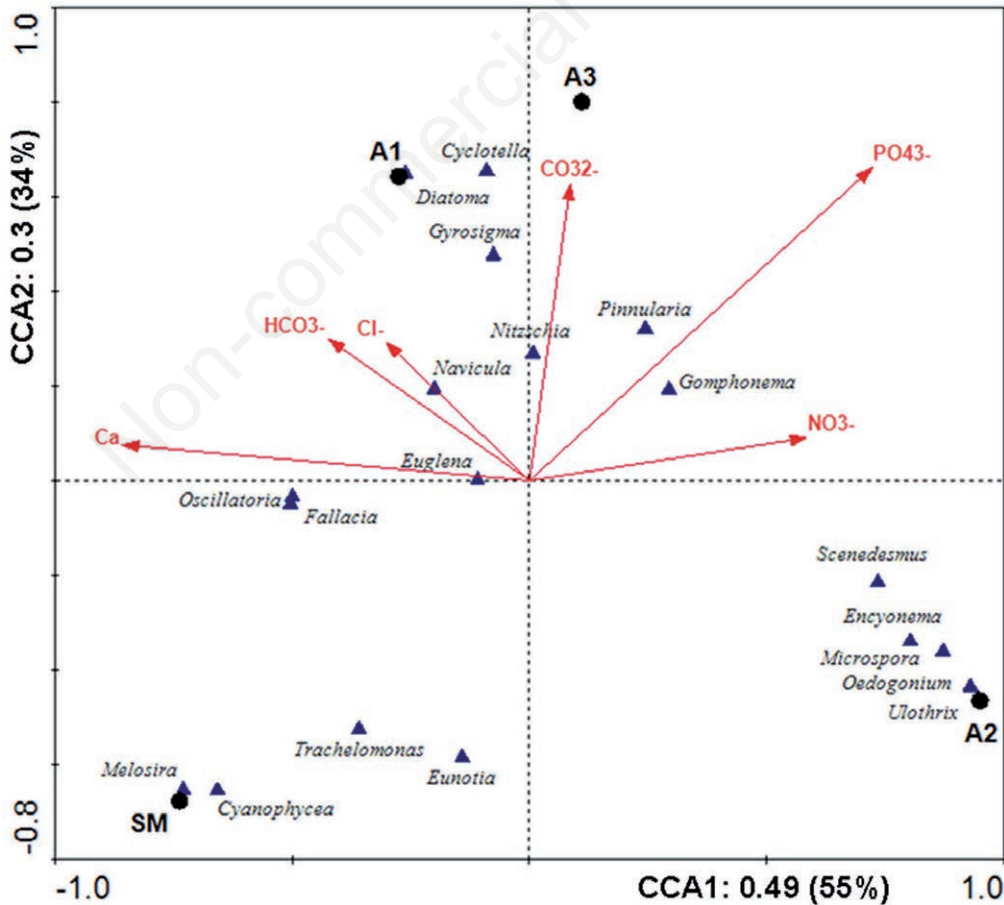
	Ponds				PCA	
	A1	A2	A3	SM	PC1 (60%)	PC2 (27%)
Color	Amber	Dark amber	Amber	Amber light		
Conductivity ( $\mu\text{S cm}^{-1}$ )	1089.1	183.6	586.1	349.1	0.12	0.07
Salinity ( $\text{mg L}^{-1}$ )	507.6	136.1	288.6	169		
TDS ( $\text{mg L}^{-1}$ )	561.2	130.1	392.8	248.4		
pH	7.3	6.9	8.6	7.7	0.31	-0.16
Carbonate ( $\text{mg L}^{-1}$ )	ND	ND	21.8	ND	<b>0.32</b>	0.13
Bicarbonate ( $\text{mg L}^{-1}$ )	182.5	157.5	555	320	<b>0.32</b>	-0.14
Sulfate ( $\text{mg L}^{-1}$ )	44.4	50.8	89.8	34.2	0.25	0.3
Chloride ( $\text{mg L}^{-1}$ )	7.1	7.1	128.6	28.6	0.32	-0.11
Sodium ( $\text{mg L}^{-1}$ )	21.2	30.3	186	37.4	0.31	0.04
Potassium ( $\text{mg L}^{-1}$ )	28.4	38.7	80.9	22.6	0.25	0.28
Calcium ( $\text{mg L}^{-1}$ )	24	10.4	48	60.8	0.22	<b>-0.34</b>
Magnesium ( $\text{mg L}^{-1}$ )	13.7	8.3	12.2	5.4	0.11	0.4
Nitrate ( $\text{mg L}^{-1}$ )	1	1	ND	ND	<b>-0.25</b>	0.31
Nitrite ( $\text{mg L}^{-1}$ )	ND	ND	ND	ND		
Arsenic ( $\text{mg L}^{-1}$ )	35	15	60	20	0.29	0.14
Fluoride ( $\text{mg L}^{-1}$ )	0.4	0.4	2	0.3	0.31	0.17
Phosphate ( $\text{mg L}^{-1}$ )	9	9	9	5.7	0.03	<b>0.49</b>
Hardness ( $\text{m}^2 \text{L}^{-1}$ )	2.3	1.2	3.4	3.5	0.24	-0.3

The detection limit of the determination of  $\text{NO}_3^-$  is  $0.2 \text{ mg L}^{-1}$  and the analytical error of the measurements is 0.5%. A1, A2, A3, ponds in agroecosystems; TDS, total dissolved solids; ND, not detected or observed.

recorded in A1 and A3 sites. In larval diet from A2 the most abundant alga was *Microspora* sp., which is almost always in eutrophic waters (Aboal, 1988). This alga was found exclusively in agroecosystems (in tadpole's gut and in pond water samples) although it had low abundance, it could indicate the conditions of these sites.

Larvae diet in SM showed a predominance of *Trachelomonas*, which tend to prefer waters rich in organic and humic substances (Starmach, 1983; Wydrzycka, 1996). In turn, *Melosira varians* was recorded in high abundance in water of the SM pond. This species is adapted to environments with high flow velocity and oxygen (B-Béres *et al.*, 2014) and is a high-profile diatom, adapted to living in biofilms in which there is significant competition for space (Hoagland *et al.*, 1982; Berthon *et al.*, 2011). Regarding growth forms of algae, tadpoles mainly consumed motile algae or those exposed in the upper layers of biofilm, similar to the findings of other studies of grazing (Holomuzki *et al.*, 2010; Cibils Martina *et al.*, 2014).

Adaptations of certain species of algae that enable the successful exploitation of disturbed environments, such as agroecosystems, explain the high abundance and richness recorded in the diets of these tadpoles. However, the food availability does not guarantee that the larvae have better body condition, as was observed in this study. Tadpoles from A1 and A2 had lower TL, TMH, Weigh and BC and metamorphs from A1 and A3 had lower TL, MW, Weigh and BC. Diet manipulations have confirmed that food quantity can determine tadpole growth and timing of metamorphosis (Wilbur, 1977a, 1977b; Alford and Harris, 1988, Berven and Chadra, 1988). Since no lower values of abundance, diversity and evenness were detected in larval diets from agroecosystems ponds, a possible explanation could be that pollution may interfere with the food digestion, affecting the amount of food consumed by tadpoles and thus expecting a smaller mass of tadpoles (Carey and Bryant, 1995). Also, the weight can increase and decrease rapidly in response to a change in stress lev-



**Fig. 2.** Triplot (first two CCA axes) showing sites (●), abundant taxa registered in larval diets (Δ) and the water parameters (arrows represent the correlation of the physical variables with the canonical axes): Carbonate -CO<sub>3</sub><sup>2-</sup>, Bicarbonate -HCO<sub>3</sub><sup>-</sup>, Chloride -Cl<sup>-</sup>, Calcium -Ca-, Nitrate -NO<sub>3</sub><sup>-</sup>, Phosphate -PO<sub>4</sub><sup>3-</sup>.

els (Reading and Clarke, 1995). In this sense, other studies have shown that nitrogen fertilizers reduce the feeding activity of tadpoles of some species (Marco and Blaustein, 1999; Hatch and Blaustein, 2000).

Moreover, the differences in structure and composition of diet between sites could mean differences in the nutritional values, affecting the size of tadpoles and metamorphs. According to Kupferberg (1997), the natural diet of anuran larva can vary widely in terms of quantity of proteins, carbohydrates, and lipids, factors that influence the function of thyroid hormones, which are essential for metamorphosis. In experimental situations, tadpoles fed with filamentous algae with epiphytic diatoms developed more rapidly and metamorphosed with larger body size than tadpoles submitted to a diet of commercially processed food (Kupferberg *et al.*, 1994). Both filamentous algae as well as diatoms are considered important sources of nutrients since the periphytic community, where they occur in abundance, is well explored by the aquatic fauna both invertebrates and vertebrates. The importance of diatoms as a food source has also been observed in other anuran genera such as *Lithobates*, *Dendropsophus*, *Eupemphix* and *Scinax* (Hendricks, 1973; Kupferberg, 1997; Rossa-Fereset *et al.*, 2004). Diatoms can be richer in calories, mainly as a form of lipids, than the chlorophytes and they are more easily accessible for consumption than filamentous algae (Kupferberg *et al.*, 1994). It is worth to note that chlorophytes store the products of photosynthesis as carbohydrates (Bold and Wynne, 1985), which is also an important food resource.

## CONCLUSIONS

In summary, the presence of certain algae registered on the tadpoles' diet is related to the characteristics of sites. It is possible that these algae are directly associated with alterations of ponds from agroecosystems and they could be thus considered as bioindicators of environmental quality. The abundance of some food items in the natural diet of tadpoles of *R. arenarum*, especially diatoms, reveals the importance of the periphytic community for the feeding of this species of anuran. Composition and biomass of periphyton may change due to alterations of agroecosystems, and this impair the success of the tadpoles and the ending of metamorphose. Our study suggests that land use alters the availability of several taxa of algae to grazing tadpoles so the individuals would be smaller, which could have significant consequences for the anuran native populations.

## ACKNOWLEDGMENTS

Financial support was provided by SECyT-UNRC (PPI 18/C416) and FONCyT (PICT 2012-0932). SB and

LCM thank CONICET – Argentina (Consejo Nacional de Investigaciones Científicas y Tecnológicas) for the fellowship granted. Our study was authorized by the Environmental Secretary of the Córdoba Government.

## REFERENCES

- Aboal M, 1988. [Aportación al conocimiento de las algas del SE de España.VII. Clorofíceas (Chloiophyceae Wille in Warming 1884)].[Article in Spanish]. Carzdoilea 43:521-548.
- Alford RA, Harris RN, 1988. Effects of larval growth history on anuran metamorphosis. Am. Nat. 131:91-106.
- Altig R, Whiles MR, Taylor CL, 2007. What do tadpoles really eat? Assessing the trophic status of an understudied and imperiled group of consumers in freshwater habitats. Freshwater Biol. 52:386-395.
- APHA-AWWA-WEF, 1998. Standard methods for examination of water and wastewater, 20th ed. APHA-AWWA-WEF, Washington DC.
- Babini MS, Bionda CL, Salas NE, Martino AL, 2015a. Health status of tadpoles and metamorphs of *Rhinella arenarum* (Anura, Bufonidae) that inhabit agroecosystems and its implications for land use. Ecotox. Environ. Safe.118:118-125.
- Babini MS, Salas NE, Bionda CL, Martino AL, 2015b. Implicaciones de la urbanización en la presencia, distribución y ecología reproductiva de la fauna de anuros de una ciudad del área central de Argentina. Rev. Mex. Biodivers. 86:188-195.
- Babini MS, Bionda CL, Salas NE, Martino AL, 2016. Adverse effect of agroecosystem pond water on biological endpoints of common toad (*Rhinella arenarum*). Environ. Monit. Assess. 188:1-14.
- Balzarini MG, Gonzalez L, Tablada M, Casanoves F, Di Rienzo JA, Robledo CW, 2008. [Infostat Manual del Usuario]. [Book in Spanish]. Editorial Brujas, Córdoba.
- B-Béres V, Török P, Kókai Z, Krasznai ET, Tóthmérés B, Bácsi I, 2014. Ecological diatom guilds are useful but not sensitive enough as indicators of extremely changing water regimes. Hydrobiologia 738 91-204.
- Berthon V, Bouchez A, Rimet F, 2011. Using diatom life-forms and ecological guilds to assess organic pollution and trophic level in rivers: a case study of rivers in south-eastern France. Hydrobiologia 673:259-271.
- Berven KA, Chadra BG, 1988. The relationship among egg size, density and food level on larval development in the wood frog (*Rana sylvatica*). Oecologia 75:67-72.
- Bionda C, Gari N, Luque E, Salas N, Lajmanovich R, Martino A, 2012. Ecología trófica en larvas de *Rhinella arenarum* (Anura: Rhinellidae) en agroecosistemas y sus posibles implicaciones para la conservación. Rev. Biol. Trop. 60:771-779.
- Bionda C, Luque E, Gari N, Salas NE, Lajmanovich RC, Martino AL, 2013. Diet of tadpoles of *Physalaemus biligonigerus* (Leiuperidae) from agricultural ponds in the central region of Argentina. Acta Herpetol. 8:141-146.
- Blanco S, Ector L, Becares E, 2004. Epiphytic diatoms as water quality indicators in Spanish shallow lakes. Vie Milieu 54:71-79.
- Bold HC, Wynne MJ, 1985. Introduction to the algae. Prentice-Hall Inc., Englewood Cliffs.
- Bosch B, Mañas F, Gorla N, Aiassa D, 2011. Micronucleus test



- in post metamorphic *Odontophrynus cordobae* and *Rhinella arenarum* (Amphibia: Anura) for environmental monitoring. *J. Toxicol. Environ. Health. Sci.* 3:154-163.
- Bridarolli ME, di Tada IE, 1996. [Algunos aspectos de la geografía física de la provincia de Córdoba, p. 15-38]. In: Tada I.E. and Bucher E.H. (eds.), [Biodiversidad de la provincia de Córdoba. Fauna]. [Book in Spanish]. Universidad Nacional de Río Cuarto.
- Burton EC, Gray MJ, Schmutzer AC, Miller DL, 2009. Differential responses of postmetamorphic amphibians to cattle grazing in wetlands. *J. Wildl. Manage.* 73:269-277.
- Carey C, Bryant CJ, 1995. Possible interrelations among environmental toxicants, Amphibian development, and decline of Amphibian populations. *Environ. Health Perspect.* 103: 13-17.
- CASAFE (Cámara de Sanidad Agropecuaria y Fertilizantes), 1999. [Guía de Productos Fitosanitarios para la República Argentina]. [Book in Spanish]. Buenos Aires: 1600 pp.
- Cei JM, 1980. Amphibians of Argentina, *Monit. Zool. Ital. Monogr.* 2, Florence: 609 pp.
- Cibils Martina L, Márquez J, Principe R, Gari N, Albariño R, 2014. Does grazing change algal communities from grassland and pine afforested streams? A laboratory approach. *Limnologica* 49:26-32.
- Collins JP, Crump M, 2009. Extinction in our time. Oxford University Press, New York: 304 pp.
- Correll DL, 1998. The role of phosphorus in the eutrophication of receiving waters: a review. *J. Environ. Qual.* 27:261-266.
- Di Rienzo JA, Guzmán AW, Casanoves F, 2002. A multiple comparisons method based on the distribution of the root node distance of a binary tree. *J. Agric. Biol. Environ. Stat.* 7: 1-14.
- Di Rienzo JA, Casanoves F, Balzarini MG, Gonzalez L, Tablada M, Robledo CW. [InfoStatversión 2012]. GrupoInfoStat, FCA, Universidad Nacional de Córdoba, Argentina. Available from: <http://www.infostat.com.ar>
- Díaz Quirós C, Rivera Rondón CA, 2004. [Diatomeas de pequeños ríos andinos y su utilización como indicadoras de condiciones ambientales]. [Article in Spanish]. *Caldasia* 26:381-394.
- Díaz-Paniagua C, 1985. Larval diets related to morphological characters of five anuran species in the biological reserve of Donana (Huelva, Spain). *Amphib. Reptil.* 6:307-322.
- Dunson WA, Wyman RL, Corbett ES, 1992. A symposium on amphibian declines and habitat acidification. *J. Herpetol.* 26:349-352.
- Duong TT, Morin S, Herlory O, Feurtet-Mazel A, Coste M, Boudou A, 2008. Seasonal effects of cadmium accumulation in periphytic diatom communities of freshwater biofilms. *Aquat. Toxicol.* 90:19-28.
- Echeverría DD, Fiorito de Lopez LE, Vaccaro OM, Filipello AM, 1987. [Consideraciones acerca de las formulas dentarias de las larvas de *Bufo arenarum* Hensel (Anura: Bufonidae)]. [Article in Spanish]. *Cuadernos de Herpetología* 3:33-39.
- Farlowe V, 1928. Algae of ponds as determined by an examination of the intestinal contents of tadpoles. *Biol. Bull.* 55:443-148.
- Frost DR, 2014. Amphibian species of the world: an online reference, ver. 60. Accessed on: 25 January 2016. Available from: <http://researchamnh.org/herpetology/amphibia/indexhtml>
- GAA (Global Amphibian Assessment), 2004. Summary of key findings on line. Accessed on: 25 January 2016. Available from: [www.globalamphibians.org](http://www.globalamphibians.org)
- Gallardo JM, 1987. [Anfibios Argentinos, guía para su identificación]. [Book in Spanish]. Biblioteca Mosaico: 98 pp.
- Gatica EA, Almeida CA, Mallea MA, Corigliano CM, González P, 2012. Water quality assessment, by statistical analysis, on rural and urban areas of Chocancharava River (Río Cuarto), Córdoba, Argentina. *Environ. Monit. Assess.* 184:7257-7274.
- Gómez N, Licursi M, 2001. The Pampean Diatom Index (IDP) for assessment of rivers and streams in Argentina. *Aquat. Ecol.* 35:173-181.
- Gosner KL, 1960. A simplified table for staging anuran embryos and larvae with notes on identification. *Herpetologica* 16:183-190.
- Hamer AJ, Makings JA, Lane SJ, Mahony MJ, 2004. Amphibian decline and fertilizers used on agricultural land in south-eastern Australia. *Agric. Ecosyst. Environ.* 102:299-305.
- Hatch AC, Blaustein AR, 2000. Combined effects of UV-B, nitrate, and low pH reduce the survival and activity level of larval Cascades frogs (*Rana cascadae*). *Arch. Environ. Con. Tox.* 39:494-499.
- Hendricksf S, 1973. Intestinal contents of *Rana pipiens* Schreber (Ranidae) larvae. *Southwest. Nat.* 18:99-101.
- Hensel R, 1867. [Beiträge zur Kenntnis der Wirbelthiere Südbrasilens]. [Article in German]. *Arch. Naturgesch.* 33:120-162.
- Heyer WR, 1972. Food item analysis of mixed tadpole populations from Thailand. *Herpetol. Rev.* 4:127.
- Heyer WR, 1974. Niche measurements of frog larvae from a seasonal tropical location in Thailand. *Ecology* 55:651-656.
- Heyer WR, 1976. Studies in larval amphibian habitat partitioning. *Smithson. Contrib. Zool.* 242 1-27.
- Hill BH, Stevenson RJ, Herlihy AT, McCormick FH, Kaufmann PR, Johnson CB, 2000. Use of periphyton assemblage data as an index of biotic integrity. *J. N. Am. Benthol. Soc.* 19:50-67.
- Hoagland KD, Roemer SC, Rosowski JR, 1982. Colonization and community structure of two periphyton assemblages, with emphasis on the diatoms (Bacillariophyceae). *Am. J. Bot.* 69:188-213.
- Holomuzki, JR, Feminella, JW, Power, ME, 2010. Biotic interactions in fresh water benthic habitats. *J. N. Am. Benthol. Soc.* 29:220-244.
- Holt EA, Miller SW, 2011. Bioindicators: using organisms to measure environmental impacts. *Nature Education Knowledge* 3:8.
- Hopkins WA, 2007. Amphibians as models for studying environmental change. *Ilar J.* 48:270-277.
- Howe GE, Gillis R, Mowbray RC, 1998. Effect of chemical synergy and larval stage on the toxicity of atrazine and alachlor to amphibian larvae. *Environ. Toxicol. Chem.* 17:519-525.
- Ivorra N, Barranguet C, Jonker M, Kraak MHS, Admiraal W, 2002. Metal-induced tolerance in the freshwater microbenthic diatom *Gomphonema parvulum*. *Environ. Pollut.* 116:147-157.
- Jenssen TA, 1967. Food habits of the green frog, *Rana clamitans*, before and during metamorphosis. *Copeia* 1967:214-218.
- Knutson MG, Richardson WB, Reineke DM, Gray BR, Parmelee JR, Weick SE, 2004. Agricultural ponds support amphibian populations. *Ecol. Appl.* 14:669-684.
- Kupferberg SJ, Marks JC, Power ME, 1994. Effects of variation in natural algal and detrital diets on larval anuran (*Hylaeregilla*) life-history traits. *Copeia* 2:446-457.

- Kupferberg SJ, 1997. The role of larval diet in anuran metamorphosis. *Am. Zool.* 37:146-159.
- Lajmanovich RC, 2000. [Interpretación ecológica de una comunidad larvaria de anfibios anuros]. [Article in Spanish]. *Interciencia* 25:71-79.
- Lajmanovich RC, Cabagna-Zenklusen MC, Attademo AM, Junges CM, Peltzer PM, Bassó A, Lorenzatti E, 2014. Induction of micronuclei and nuclear abnormalities in tadpoles of the common toad (*Rhinella arenarum*) treated with the herbicides Liberty® and glufosinate-ammonium. *Mutat. Res. Genet. Toxicol. Environ. Mutagen.* 769:7-12.
- Lajmanovich RC, de La Sierra P, Marino F, Peltzer P, Lenardón A, Lorenzatti E, 2005. [Determinación de residuos de organo clorados en vertebrados silvestres del Litoral Fluvial de Argentina]. [Article in Spanish]. *INSUGEO, Miscelánea* 14:255-262.
- Loschenkohl A, 1986. Niche partitioning and competition in tadpoles, p. 399-402. In Z. Roček (ed.), *Studies in herpetology. Proc. 3rd Ann. Gen. Meet. Societas Europaea Herpetologica*, Charles University, Prague.
- Marco A, Blaustein AR, 1999. The effects of nitrite on behavior and metamorphosis in cascade frogs (*Rana cascadae*). *Environ. Toxicol. Chem.* 18:946-949.
- Mitsch WJ, Gosselink JG, 2000. *Wetlands*, 3rd ed. J. Wiley & Sons, New York: 920 pp.
- Mugni HA, 2008. [Concentración de nutrientes y toxicidad de pesticidas en aguas superficiales de cuencas rurales]. [PhD Thesis in Spanish]. Universidad Nacional de La Plata.
- Nathan J M, James VG, 1972. The role of protozoa in the nutrition of tadpoles. *Copeia* 1972:669-679.
- Nather Khan ISA, 1990. Assessment of water pollution using Diatom community structure and species distribution. A case study in a tropical river basin. *Int. Rev. Gesamten Hydrobiol.* 75:317-338.
- Nori J, Lescano JN, Illoldi-Rangel P, Frutos N, Cabrera MR, Leynaud GC, 2013. The conflict between agricultural expansion and priority conservation areas: Making the right decisions before it is too late. *Biol. Conserv.* 159:507-513.
- Oksanen J, Blanchet FG, Kindt R, Legendre P, Minchin PR, O'Hara RB, Simpson GL, Solymos P, Stevens MHH, Wagner H, 2013. *vegan: Community Ecology Package*. R package ver. 2.0-8. Available from: <http://CRAN.R-project.org/package=vegan>
- PEGRC (Plan Estratégico Gran Río Cuarto), 2011. [Estudio: 1. EG. Ministerio de economía y finanzas Publicas-Argentina, Préstamo BID 1896-AR, Programa Multisectorial de Preinversión II. Proyecto: "Plan estratégico y código de planeamiento urbano para el aglomerado del Gran Río Cuarto". Documento de Trabajo N° 2: Diagnóstico Eje Político y Documento de Trabajo N° 3: Diagnóstico Eje Urbano]. [Document in Spanish]. Ministerio de economía y finanzas Publicas.
- Pengue WA, 2004. Transgenic crops in Argentina and its hidden costs, p. 91-101. In: E. Ortega and S. Ulgiati (eds.), *Proc. IV Biennial Int. Workshop Advances in Energy Studies*. Unicamp, Campinas, SP, Brazil.
- Pollo FE, Grenat PR, Otero MA, Salas NE, Martino AL, 2016. Assessment in situ of genotoxicity in tadpoles and adults of frog *Hypsiboas cordobae* (Barrio 1965) inhabiting aquatic ecosystems associated to fluorite mine. *Ecotoxicol. Environ. Saf.* 133:466-474.
- Potapova M, Charles DF, 2007. Diatom metrics for monitoring eutrophication in rivers of the United States. *Ecol. Indic.* 7:48-70.
- Quinn GP, Keough MJ, 2002. *Experimental design and data analysis for biologists*. Cambridge University Press: 537 pp.
- R Core Team. 2013. *R: A language and environment for statistical computing*. R Foundation for Statistical Computing, Vienna, Austria. Available from: <http://www.R-project.org/>
- Ramírez AM, Plata-Díaz Y, 2008. [Diatomeas perifíticas en diferentes tramos de dos sistemas lóticos de alta montaña (páramo de Santurbán, norte de Santander, Colombia) y su relación con las variables ambientales]. [Article in Spanish]. *Acta Biologica Colombiana* 13:199-216.
- Reading CJ, Clarke RT, 1995. The effects of density, rainfall and environmental temperature on body condition and fecundity in the common toad, *Bufo bufo*. *Oecologia* 102:453-459.
- Relyea RA, 2009. A cocktail of contaminants: how mixtures of pesticides at low concentrations affect aquatic communities. *Oecologia* 159:363-376.
- Rimet F, Bouchez A, 2011. Use of diatom life-forms and ecological guilds to assess pesticide contamination in rivers: Lotic mesocosm approaches. *Ecol. Indic.* 11:489-499.
- Roberts TL, 2014. Cadmium and phosphorous fertilizers: the issues and the science. *Procedia Engineering* 83:52-59.
- Rosemond, AD, Mulholland, PJ, Elwood JW, 1993. Top-down and bottom-up control of stream periphyton: effects of nutrients and herbivores. *Ecology* 74:1264-80.
- RossaFeres D, Jim J, Fonseca MG, 2004. Diets of tadpoles from a temporary pond in southeastern Brazil (Amphibia, Anura). *Rev. Bras. Zool.* 21:745-754.
- Rossi RL, 2006. [Impactos recientes de la soja en la Argentina Panorama productivo del cultivo]. [Article in Spanish]. *Agromercado, Cuadernillo Clásico* 129:4-7.
- Rowe CL, Hopkins WA, Bridges C, 2003. Physiological ecology of amphibians in relation to susceptibility to natural and anthropogenic factors, pp. 9-58. In: G. Linder, S. Krest and D. (eds.), *Amphibian decline: an integrated analysis of multiple stressor effects* Society of Environmental Toxicology and Chemistry Press, Pensacola.
- Sabater S, Armengol J, Sabater F, Comas E, Urrutia I, Urrizalqui I, 2000. Algal biomass in a disturbed Atlantic river: water quality relationships and environmental implications. *Sci. Total Environ.* 263:85-95.
- Sabater S, Vilalta E, Gaudes A, Guasch H, Munoz I, Romani A, 2003. Ecological implications of mass growth of benthic cyanobacteria in rivers. *Aquat. Microb. Ecol.* 32:175-84.
- Schmutzer AC, Gray MJ, Burton EC, Miller DL, 2008. Impacts of cattle on amphibian larvae and the aquatic environment. *Freshwater Biol.* 53:2613-2625.
- Seale DB, 1980. Influence of amphibian larvae on primary production, nutrient flux, and competition in a pond ecosystem. *Ecology* 61:1531-1550.
- Seale DB, Beckvar N, 1980. The comparative ability of anuran larvae (genera: Hyla, Bufo, and Rana) to ingest suspended blue green algae. *Copeia* 1980:495-503.
- Starmach K, 1983. [Euglenophyta; Eugleniny]. [Book in Polish]. *Panstwowe Wydawnictwo Naukowe, Warszawa*: 594 pp.
- StatSoft, 2001. *Statistica for Windows, Release 6.0, Computer Program Manual*, StatSoft, Inc. Tulsa, USA.

- Stevenson J, Pan Y, 1999. Assessing environmental conditions in rivers and streams with diatoms, p. 11-40. In: E.F. Stoermer and J.P. Smol (eds.), *The diatoms: applications for the environmental and earth sciences*. Cambridge University Press, Cambridge.
- Tank JL, Dodds WK, 2003. Nutrient limitation of epilithic and epixylic biofilms in ten North American streams. *Freshwater Biol.* 48:1031-49.
- terBraak CJK, Smilauer P, 2002. *CANOCO Reference Manual and CanoDraw for Windows User's guide: Software for Canonical Community Ordination*, ver. 4.5. Microcomputer Power, Ithaca.
- Tison J, Giraudel JL, Coste M, 2008. Evaluating the ecological status of rivers using an index of ecological distance: An application to diatom communities. *Ecol. Indic.* 8: 285-291.
- Venturino A, Rosenbaum E, Caballero De Castro A, Anguiano OL, Gauna L, Fonovich De Schroeder T, Pechen De D'Angelo AM, 2003. Biomarkers of effect in toads and frogs. *Biomarkers* 8:167-186.
- Vera Candiotti JV, Natale GS, Soloneski S, Ronco AE, Larramendy ML, 2010. Sublethal and lethal effects on *Rhinella arenarum* (Anura, Bufonidae) tadpoles exerted by the pirimicarb-containing technical formulation insecticide Aficida®. *Chemosphere* 78:249-255.
- Villafañe VE, Reid FMH, 1995. [Métodos de microscopia para la cuantificación del fitoplancton, p.169-185]. In: K. Alveal, M.E. Ferrario, E.C. Oliveira and E. Sar (eds.), [Manual de métodos ficológicos]. [Book in Spanish]. Universidad de Concepción, Chile.
- Wassersug RJ, 1972. The mechanism of ultraplanktonic entrapment in anuran larvae. *J. Morph.* 137: 279-288.
- Wassersug RJ, 1975. The adaptive significance of the tadpole stage with comments on the maintenance of complex life cycles in anurans. *Am. Zool.* 15:405-417.
- Whitton BA, Kelly MG, 1995. Use of algae and other plants for monitoring rivers. *Aust. J. Ecol.* 20:45-56.
- Wilbur HM, 1977a. Density-dependent aspects of growth and metamorphosis in *Bufo americanus*. *Ecology* 48:196-200.
- Wilbur HM, 1977b. Interaction of food level and population density in *Rana sylvatica*. *Ecology* 58: 206-209.
- Wilbur HM, 1980. Complex life cycle. *Annu. Rev. Ecol. Syst.* 11:67-93.
- Wood SL, Richardson JS, 2009. Impact of sediment and nutrient inputs on growth and survival of tadpoles of the Western Toad. *Freshwater Biol.* 54:1120-1134.
- Wydrzycka B, UM 1996. [Las especies de *Trachelomonas* (Algas: Euglenophyta) en tres lagunas volcánicas de Costa Rica]. [Article in Spanish]. *Rev. Biol. Trop.* 44:477-484.
- Young BE, Stuart SN, Chanson JS, Cox NA, Boucher TM, 2004. [Joyas que están desapareciendo: El estado de los anfibios en el nuevo mundo]. [Book in Spanish]. Nature Serve, Arlington: 53 pp.
- Yucra HA, Tapia PM, 2008. [El uso de microalgas como bioindicadoras de polución orgánica en Brisas de Oquendo, Callao, Perú]. [Article in Spanish]. *Biologist (Lima)* 6:41-47.