

[JOURNAL OF LIMNOLOGY](#)

DOI: 10.4081/jlimnol.2022.2150

**SUPPLEMENTARY MATERIAL**

**Contemporary community composition, spatial distribution patterns, and biodiversity characteristics of zooplankton in large alpine Lake Sevan, Armenia**

Armine Hayrapetyan,<sup>1\*</sup> Gor Gevorgyan,<sup>1</sup> Martin Schultze,<sup>2</sup> Muhammed Shikhani,<sup>2</sup>  
Termine Khachikyan,<sup>1</sup> Aleksandr Krylov,<sup>3</sup> Karsten Rinke<sup>2</sup>

<sup>1</sup>Scientific Center of Zoology and Hydroecology, National Academy of Sciences of Republic of Armenia, Yerevan, Armenia

<sup>2</sup>Department Lake Research, Helmholtz Centre for Environmental Research-UFZ, Magdeburg, Germany

<sup>3</sup>Papanin Institute for Biology of Inland Waters, Russian Academy of Sciences, Borok, Yaroslavl oblast, Russia

\*Corresponding author: [armine.hayrapetyan@sczhe.sci.am](mailto:armine.hayrapetyan@sczhe.sci.am)

Tab. S1. Station list of the samplings in Lake Sevan, refer to Fig. 1 for a map of stations.

<b>Station</b>	<b>Depth (m)</b>	<b>Location</b>
1	7	40°31'03.1"N 44°57'04.7"E
2	25	40°31'13.0"N 44°57'43.7"E
3	7	40°30'51.5"N 44°58'38.3"E
4	30	40°30'60.0"N 44°58'53.7"E
5	7	40°30'49.7"N 45°01'17.8"E
6	25	40°31'21.6"N 45°01'41.3"E
7	7	40°25'46.0"N 45°06'38.0"E
8	30	40°25'51.2"N 45°06'50.9"E
9	7	40°25'24.1"N 45°09'38.8"E
10	25	40°25'36.7"N 45°09'40.0"E
11	7	40°29'43.3"N 45°16'13.3"E
12	30	40°29'00.5"N 45°14'45.6"E
13	60	40°32'26.8"N 45°06'10.2"E
14	7	40°36'31.8"N 45°02'37.8"E
15	30	40°36'22.6"N 45°02'35.9"E
16	7	40°23'03.2"N 45°14'51.2"E
17	30	40°23'37.1"N 45°17'36.8"E
18	7	40°20'28.8"N 45°14'24.0"E
19	25	40°20'53.3"N 45°16'10.3"E
20	7	40°09'57.6"N 45°18'27.6"E
21	20	40°10'58.5"N 45°19'42.4"E
22	7	40°11'41.5"N 45°27'48.8"E
23	30	40°14'25.7"N 45°27'16.6"E
24	7	40°10'08.6"N 45°30'26.0"E
25	25	40°12'49.1"N 45°30'18.6"E
26	7	40°13'31.3"N 45°37'20.8"E
27	25	40°14'10.9"N 45°34'17.9"E
28	7	40°21'31.7"N 45°29'56.5"E
29	25	40°20'23.9"N 45°28'07.7"E
30	7	40°24'11.8"N 45°27'23.2"E
31	30	40°23'00.2"N 45°24'25.2"E
32	30	40°22'46.8"N 45°19'41.8"E

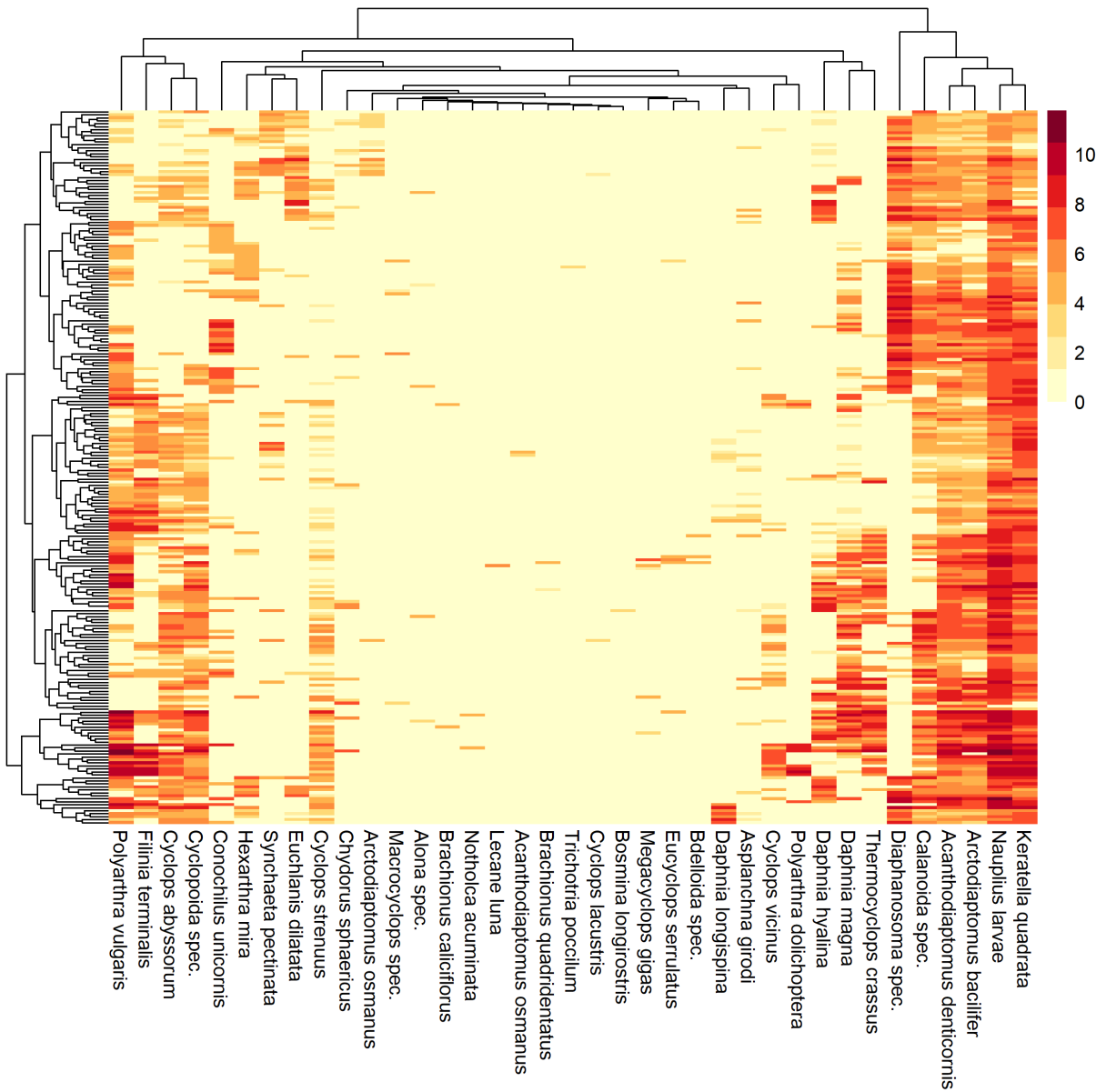


Fig. S1. Heatmap of species abundance ( $\log(n+1)$ -transformed for the different species (x-axis, hierarchical clustering on the top) and different sampling stations (y-axis, including a hierarchical clustering).

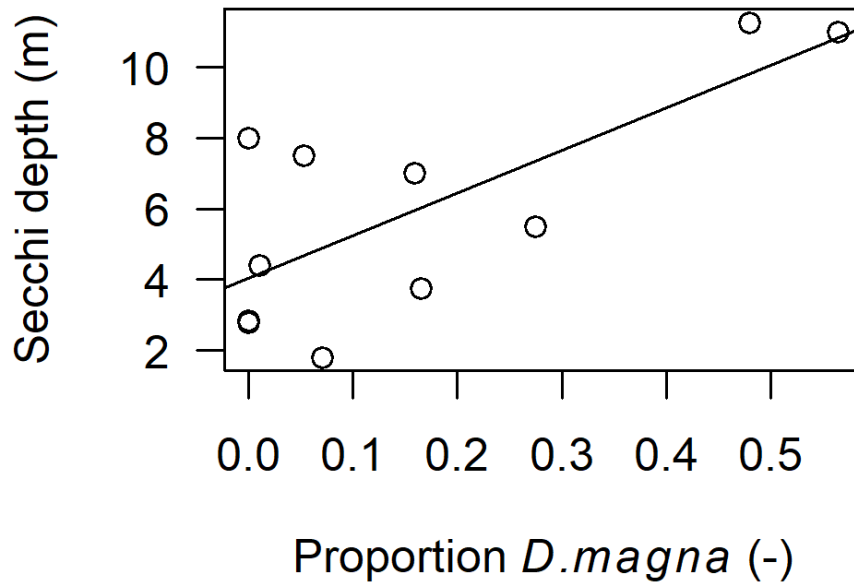


Fig. S2. Spatially averaged values of Secchi depth for all sampling times plotted against the average proportion of *Daphnia magna* in the corresponding samplings. The line represents the linear model as outlined in the results in the main paper.