

Exploiting high frequency monitoring and satellite imagery for assessing chlorophyll-a dynamics in a shallow eutrophic lake

**Monica Pinardi,¹ Gary Free,¹ Beatrice Lotto,² Nicola Ghirardi,^{1,2} Marco Bartoli,^{2,3}
Mariano Bresciani^{1*}**

¹Institute for Electromagnetic Sensing of the Environment, National Research Council of Italy, via Bassini 15, 20133 Milan, Italy

²Department of Chemistry, Life Sciences and Environmental Sustainability, University of Parma, Parco Area delle Scienze 33/A, 43124 Parma, Italy

³Marine Science and Technology Center of Klaipeda University, LT-92294 Klaipeda, Lithuania

***Corresponding author: bresciani.m@irea.cnr.it**

Tab. 1. Water physico-chemical data measured by ARPA Lombardy in the years 2018 and 2019 for the Superior, Middle and Inferior lakes (n=36).

		Superior Lake					Middle Lake					Inferior Lake				
		mean	SD	median	min	max	mean	SD	median	min	max	mean	SD	median	min	max
Transparency (Secchi disk)	m	1.2	0.3	1.2	0.6	1.7	0.9	0.2	0.9	0.7	1.4	0.8	0.2	0.8	0.6	1.2
Water temperature	°C	17.7	7.7	18.3	4.3	30.2	17.2	6.9	17.5	4.4	26.2	17.4	7.3	17.8	4.1	27.6
pH	pH	8.0	0.4	8.0	7.4	8.7	8.2	0.2	8.2	7.8	8.5	8.2	0.3	8.3	7.5	8.7
O₂	% sat.	127	70	102	68	303	123	30	116	87	174	139	40	132	88	227
O₂	mg L ⁻¹	11.8	5.1	11.7	6.2	22.8	11.9	2.9	11.1	9.2	17.3	13.3	3.4	11.6	9.5	19.0
Conductivity	μS cm ⁻¹	413	74	390	315	602	431	72	399	369	613	420	72	390	367	602
Hardness (CaCO₃)	mg L ⁻¹	152	41	148	99	255	156	35	155	90	227	167	31	161	122	227
Calcium (Ca²⁺)	mg L ⁻¹	44	12	44	28	74	46	11	45	26	69	48	9	47	34	68
N_NH₄⁺	mg L ⁻¹	0.067	0.044	0.053	0.010	0.152	0.046	0.033	0.042	0.010	0.116	0.061	0.046	0.051	0.010	0.138
N_NO₃⁻	mg L ⁻¹	1.9	1.7	1.4	0.5	7.1	2.0	2.1	1.2	0.8	8.5	1.6	2.2	0.8	0.1	8.4
Total nitrogen	mg L ⁻¹	2.6	1.9	2.0	1.4	8.2	2.6	2.2	1.9	1.3	9.3	2.6	2.3	1.8	1.1	9.5
P_PO₄³⁻	μg L ⁻¹	42	33	42	2	105	28	27	19	2	96	18	30	6	2	110
Total phosphorous	μg L ⁻¹	79	32	72	27	140	90	32	82	46	137	78	34	82	21	140
SiO₂	mg L ⁻¹	3.6	1.8	3.3	0.4	7.0	3.8	2.2	4.0	0.4	7.6	3.4	2.3	3.5	0.1	7.6
Chlorophyll-a	μg L ⁻¹	12.8	9.0	10.1	2.3	30.4	22.7	12.4	23.9	2.8	45.7	25.5	12.2	24.5	2.3	42.9
Total suspended solids (TSS)	mg L ⁻¹	6.6	3.4	5.5	2.0	14.0	11.7	5.9	10.9	3.8	27.3	12.6	6.0	13.8	2.8	23.3

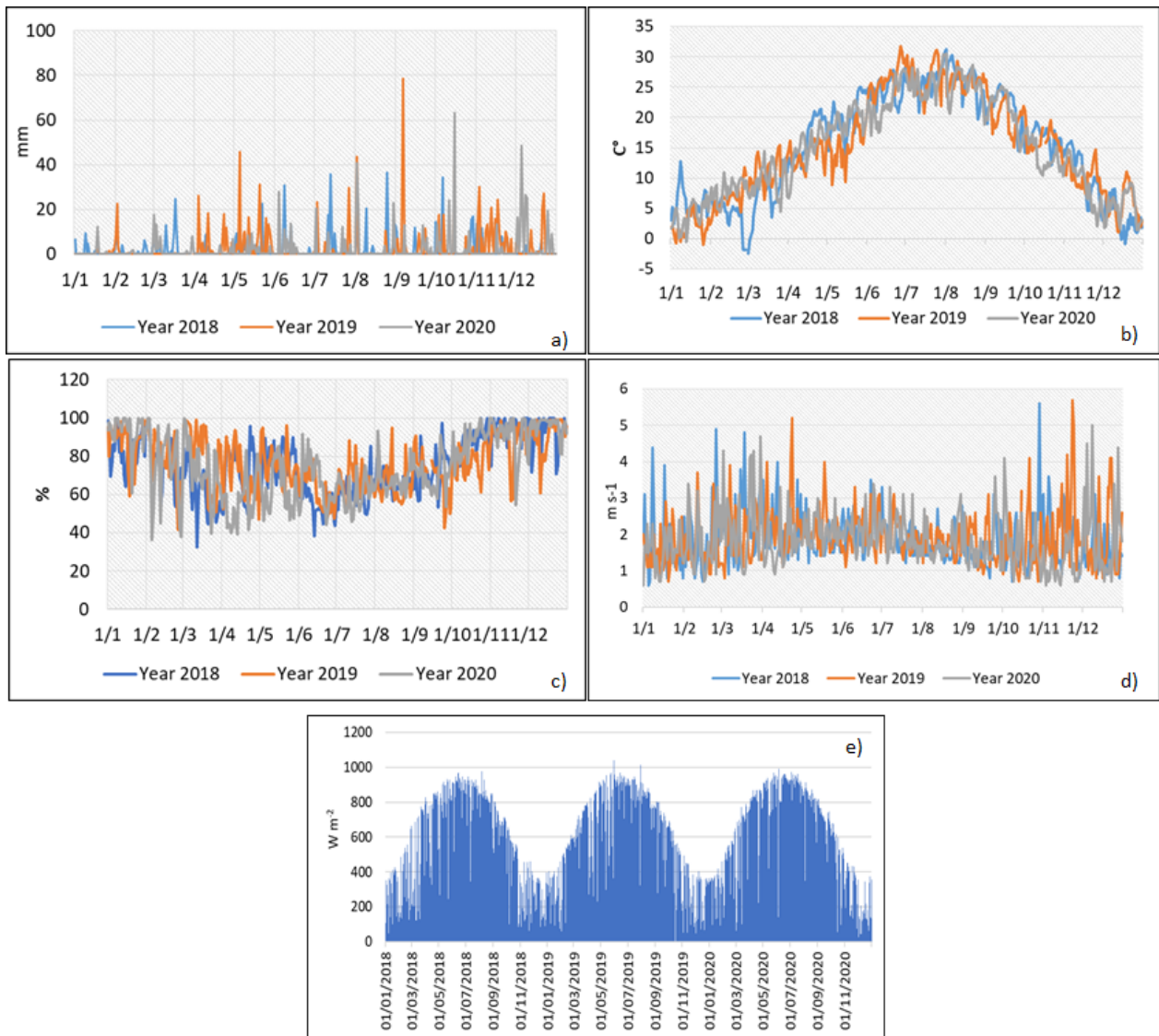


Figure 1. Daily precipitation (a), mean daily air temperature (b), relative humidity (c), average daily wind speed (d), and maximum average hourly value of solar radiance (e) for the Mantua Lakes in the period 2018-2020.