

*Assessment of nutrient enrichment in northern Saskatchewan lakes*

**Paleolimnological assessment of nutrient enrichment on diatom assemblages in *a priori* defined nitrogen- and phosphorus-limited lakes downwind of the Athabasca Oil Sands, Canada**

**Kathleen R. LAIRD,<sup>1\*</sup> Biplob DAS,<sup>2</sup> Brittany HESJEDAL,<sup>3</sup> Peter R. LEAVITT,<sup>3,4</sup>  
Graham R. MUSHET,<sup>1</sup> Kenneth A. SCOTT,<sup>5</sup> Gavin L. SIMPSON,<sup>4</sup> Björn WISSEL,<sup>4</sup>  
Jared WOLFE,<sup>3,4</sup> Brian F. CUMMING<sup>1</sup>**

<sup>1</sup>Paleoecological Environmental Assessment and Research Laboratory, Dept. of Biology, Queen's University, 116 Barrie Street, Kingston, ON, Canada, K7L 3J9

<sup>2</sup>Saskatchewan Water Security Agency, 420-2365 Albert Street, Regina, SK, Canada, S4P 4K1

<sup>3</sup>Department of Biology, University of Regina, 3737 Wascana Parkway, Regina, SK, Canada, S4S 0A2

<sup>4</sup>Institute of Environmental Change & Society, Dept. of Biology, University of Regina, 3737 Wascana Parkway, Regina, SK, Canada, S4S 0A2

<sup>5</sup>Saskatchewan Ministry of Environment, 3211 Albert Street, Regina, SK, Canada, S4S 5W6

\*Corresponding author: [lairdk@queensu.ca](mailto:lairdk@queensu.ca)

## FIGURE LEGENDS

Supplementary Fig. 1. Gamma activities and age models for: a) reference N- and P-limited lakes; b) impact N- and P-limited lakes.

Supplementary Fig. 2. Total concentration (# valves  $\times 10^8 \text{ g}^{-1}$  dry wt) of planktonic diatom taxa for: a) Reference-N limited (Ref N) lakes; b) reference P-limited (Ref P) lakes; c) impact N-limited (Imp N) lakes; d) impact P-limited (Imp P) lakes. Total concentration for Lake 9C is graphed as # valves  $\times 10^9 \text{ g}^{-1}$  dry wt.

Supplementary Fig. 3. Total flux (# valves  $\times 10^8 \text{ cm}^{-2} \text{ yr}^{-1}$ ) of planktonic diatom taxa for: a) Reference-N limited (Ref N) lakes; b) reference P-limited (Ref P) lakes; c) impact N-limited (Imp N) lakes; d) impact P-limited (Imp P) lakes.

Supplementary Fig. 4. Dominant diatom taxa groups for each of: a) Reference-N limited (Ref N) lakes; b) reference P-limited (Ref P) lakes; c) impact N-limited (Imp N) lakes; d) impact P-limited (Imp P) lakes.

Supplementary Fig. 5. Summary of dominant (>5%) diatom taxa for each lake in each of the lake groups: a) Reference-N limited (Ref N) lakes; b) reference P-limited (Ref P) lakes; c) impact N-limited (Imp N) lakes; d) impact P-limited (Imp P) lakes.

Supplementary Fig. 6. Total concentration (# valves  $\times 10^8 \text{ g}^{-1}$  dry wt) of the pennate planktonic taxa (see Fig. 3B for %) for: a) Reference-N limited (Ref N) lakes; b) reference P-limited (Ref P) lakes; c) impact N-limited (Imp N) lakes; d) impact P-limited (Imp P) lakes.

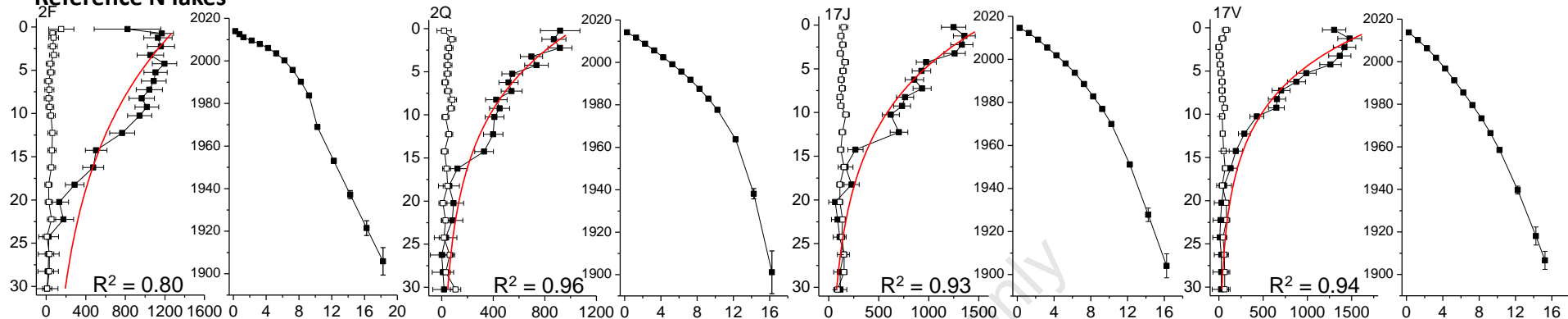
Supplementary Fig. 7. Total concentration (# valves  $\times 10^8 \text{ g}^{-1}$  dry wt) of *Discostella* and small *Cyclotella* planktonic taxa (see Fig. 3A for %) for: a) Reference-N limited (Ref N) lakes; b) reference P-limited (Ref P) lakes; c) impact N-limited (Imp N) lakes; d) impact P-limited (Imp P) lakes.

Supplementary Fig. 8. Total flux (# valves  $\times 10^8 \text{ cm}^{-2} \text{ yr}^{-1}$ ) of the pennate planktonic taxa (see Fig. 3b for % and Supplementary Fig. 6 for concentration) for: a) Reference-N limited (Ref N) lakes; b) reference P-limited (Ref P) lakes; c) impact N-limited (Imp N) lakes; d) impact P-limited (Imp P) lakes.

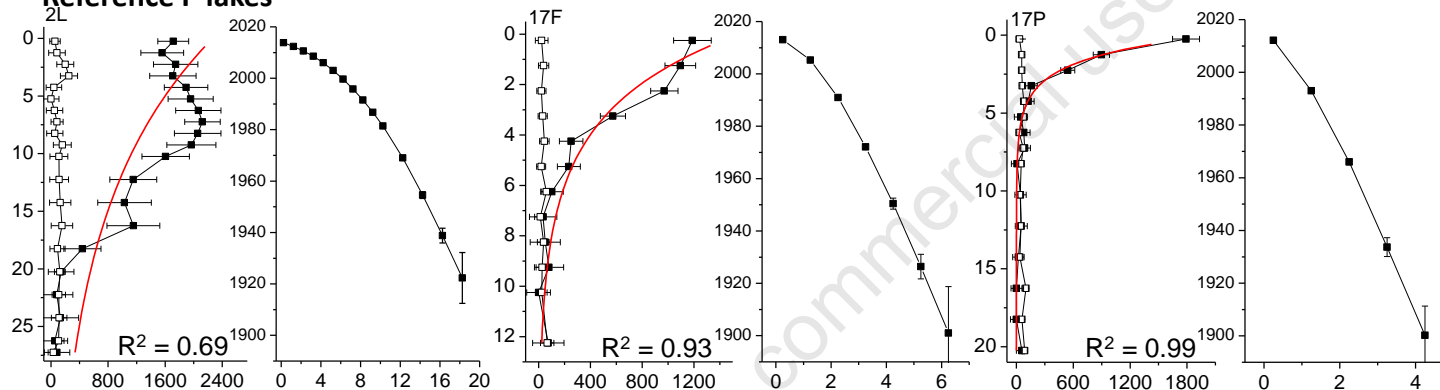
Supplementary Fig. 9. Total flux (# valves  $\times 10^8 \text{ cm}^{-2} \text{ yr}^{-1}$ ) of *Discostella* and small *Cyclotella* planktonic taxa (see Fig. 3A for % and Supplementary Fig. 7 for concentration) for: a) Reference-N limited (Ref N) lakes; b) reference P-limited (Ref P) lakes; c) impact N-limited (Imp N) lakes; d) impact P-limited (Imp P) lakes.

## Gamma activities and age models

## Reference N lakes



## Reference P lakes



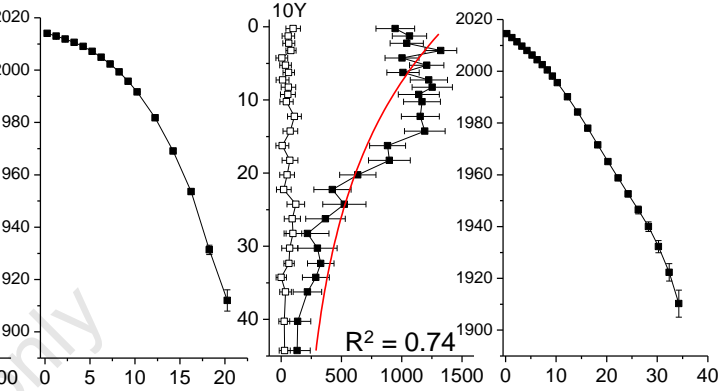
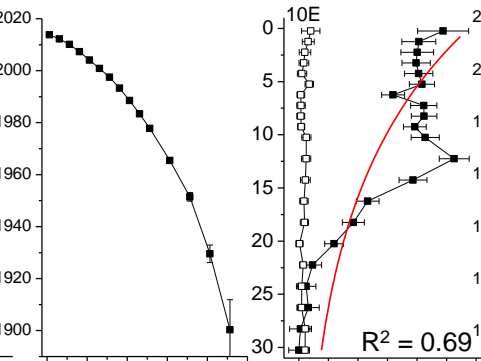
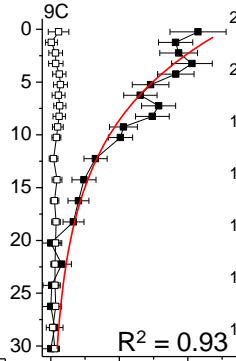
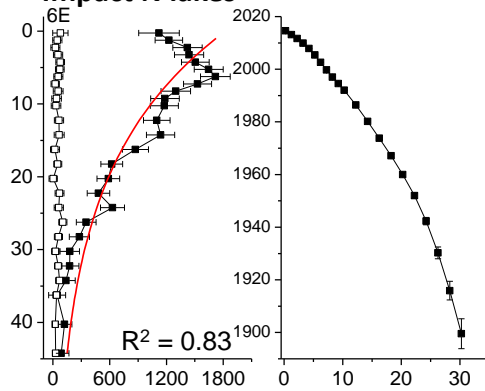
Depth (cm) vs  
<sup>214</sup>Bi & <sup>210</sup>Pb  
 Total activity  
 (Bq Kg<sup>-1</sup>)

Age (year CE) vs  
 Depth (cm)

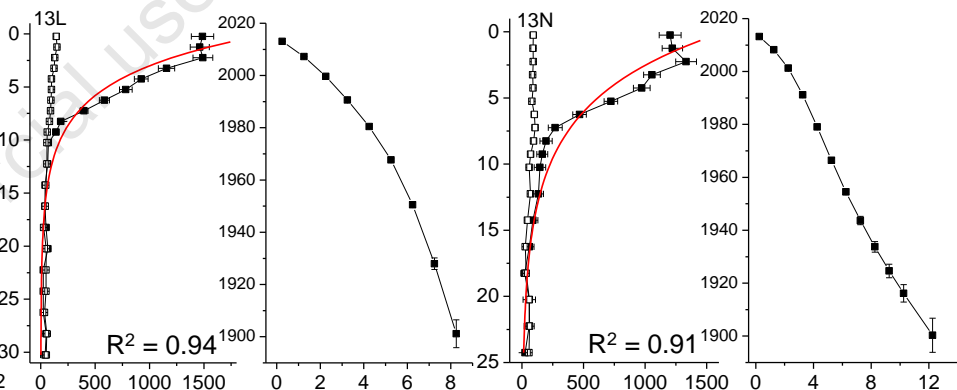
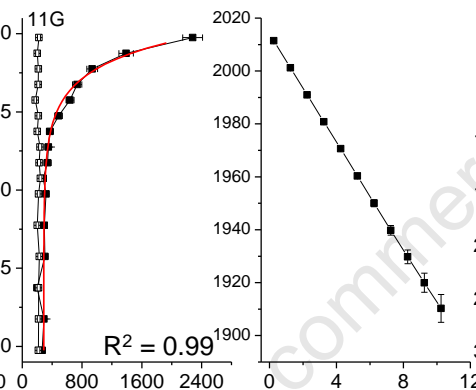
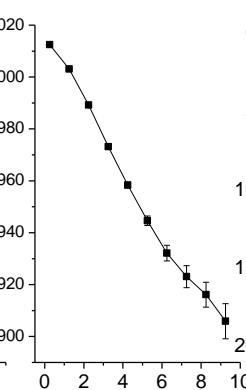
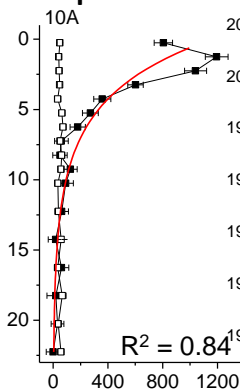
Exponential decay in red and R<sup>2</sup> at bottom right

## Gamma activities and age models

## Impact N lakes



## Impact P lakes



Depth (cm) vs  
 $^{214}\text{Bi}$  &  $^{210}\text{Pb}$   
Total activity  
( $\text{Bq Kg}^{-1}$ )

Age (year CE) vs  
Depth (cm)

Exponential decay in red and  $R^2$  at bottom right

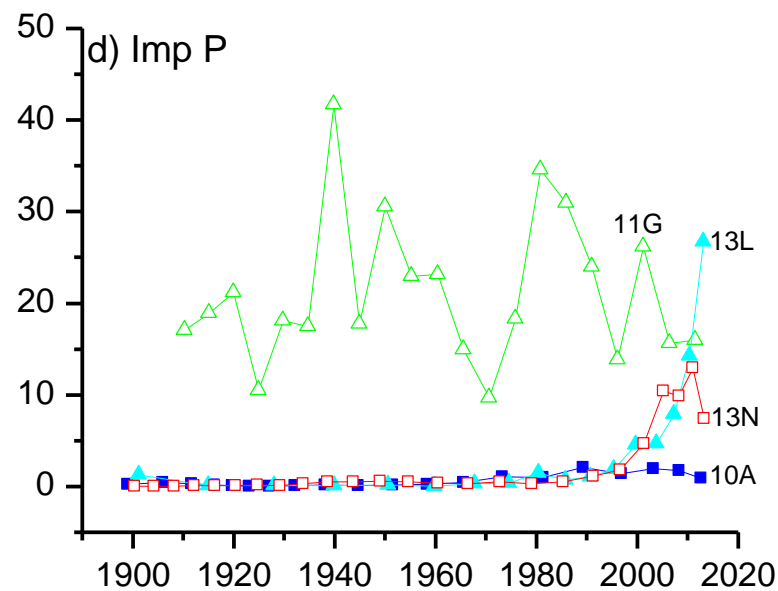
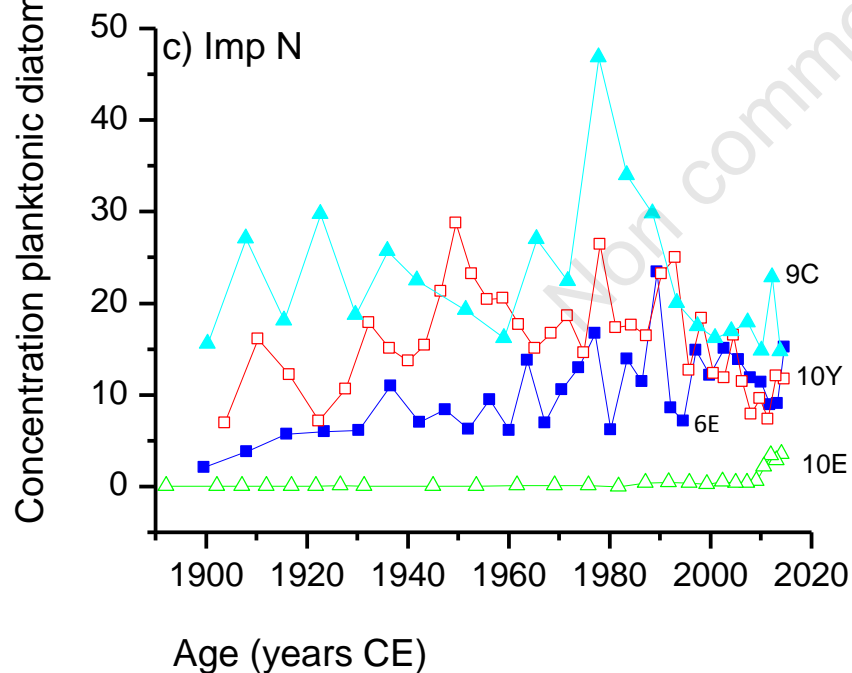
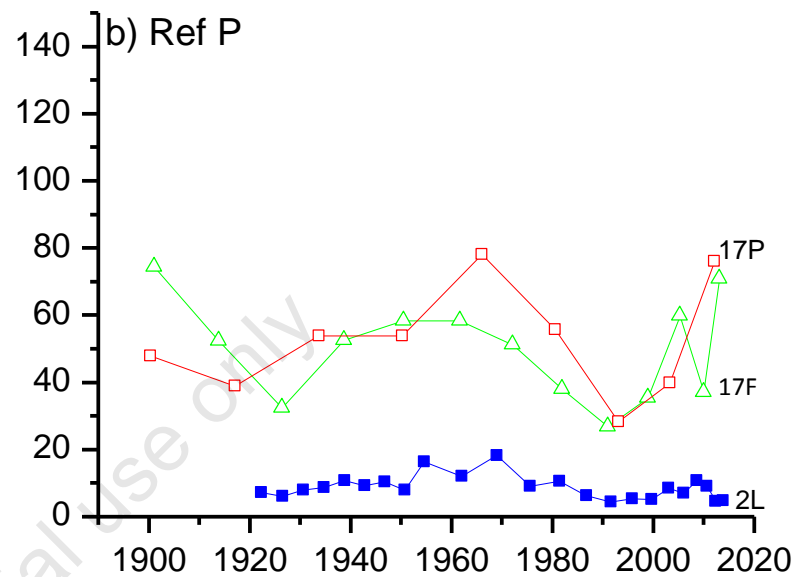
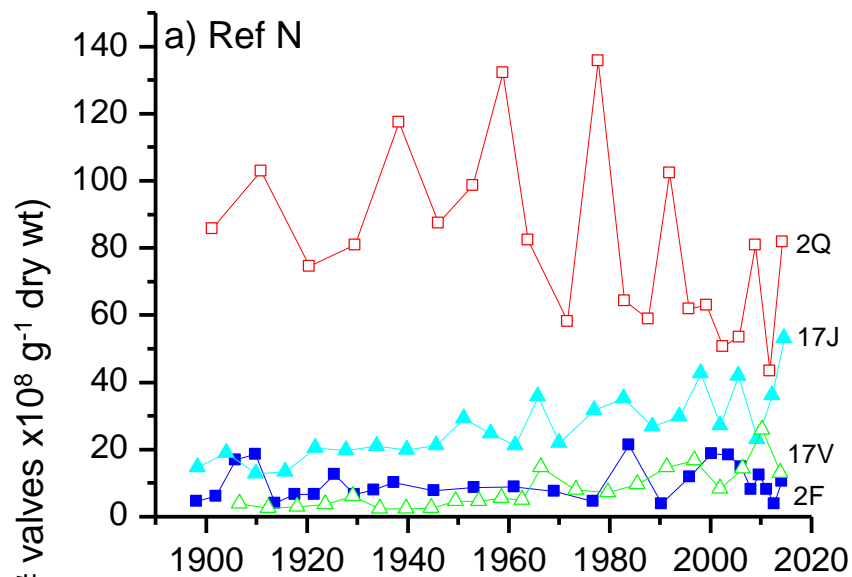
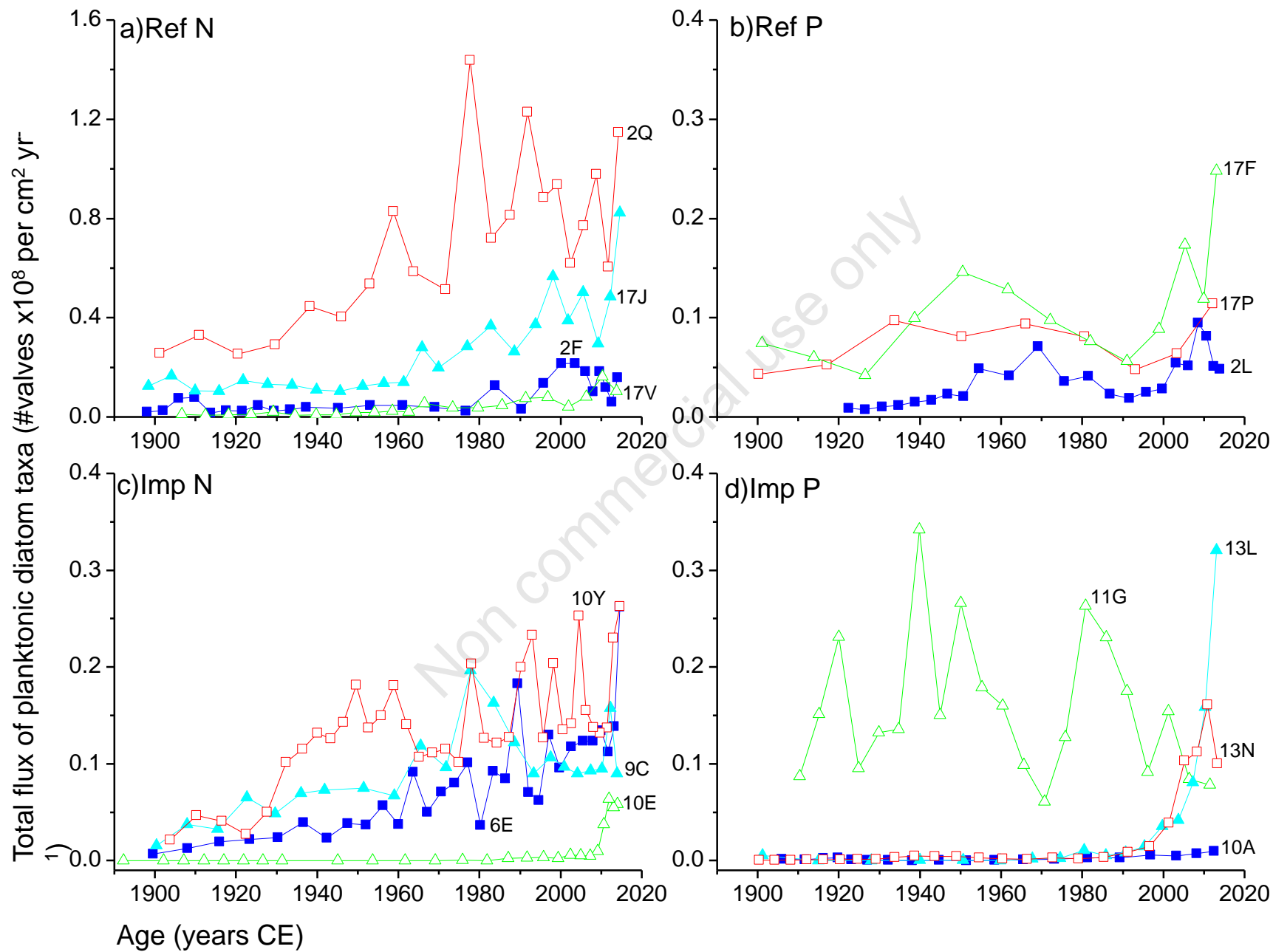
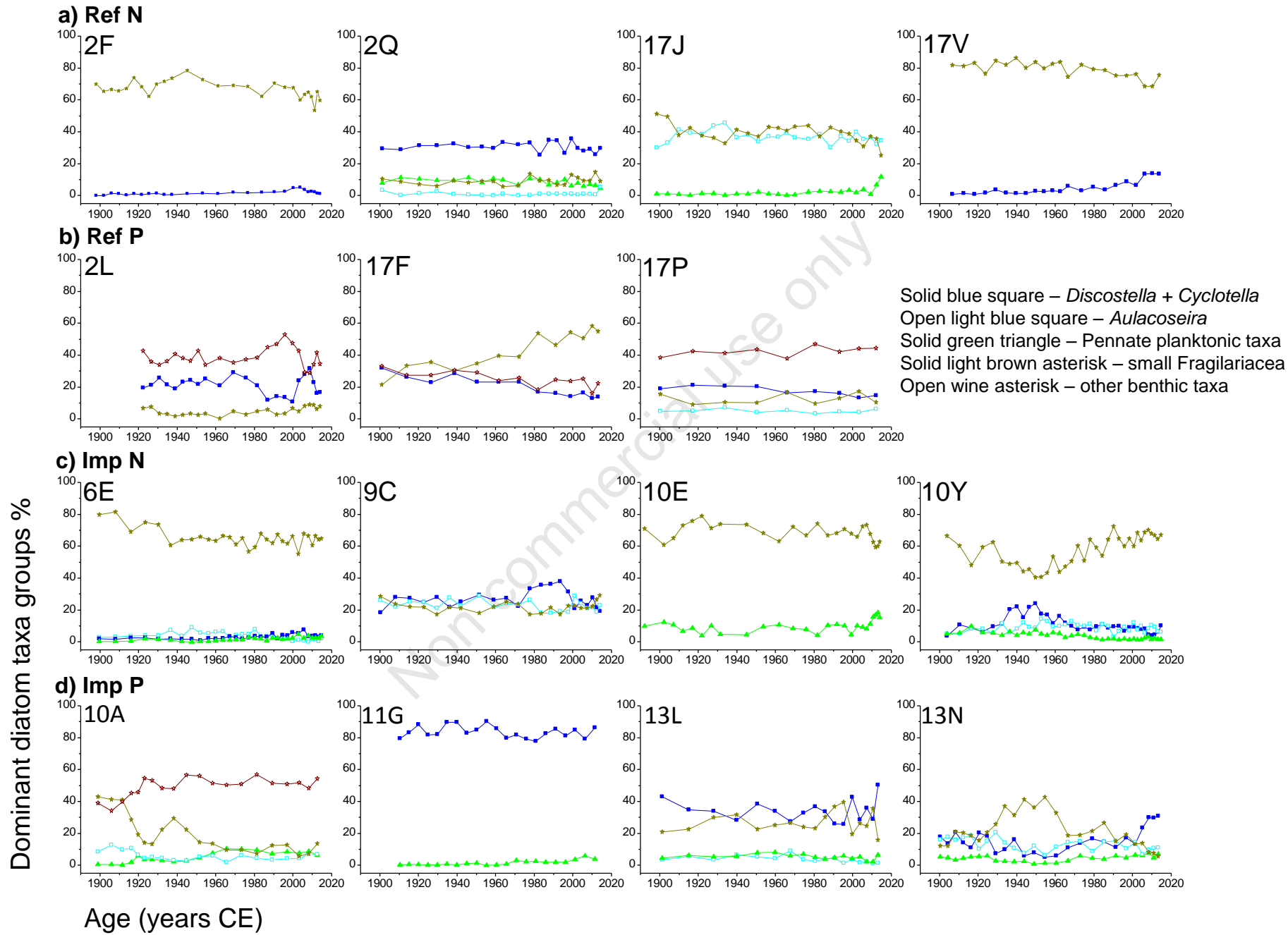


Fig. S3

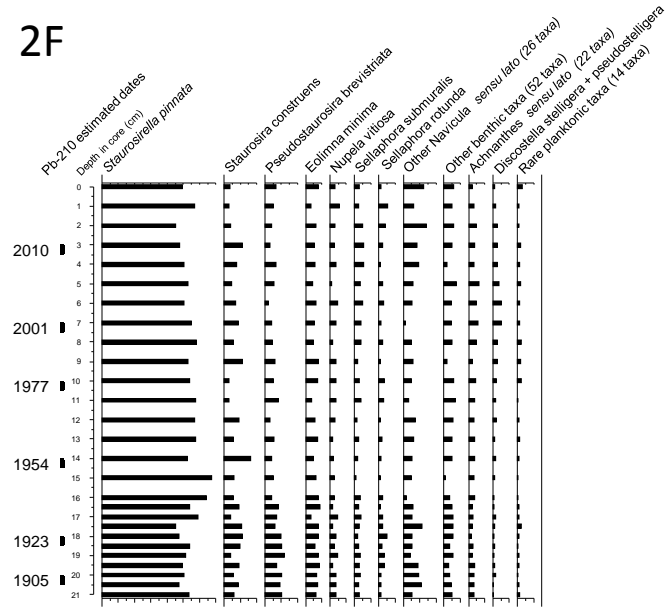




# Fig. S5 (a) Reference N lakes (5% taxa)

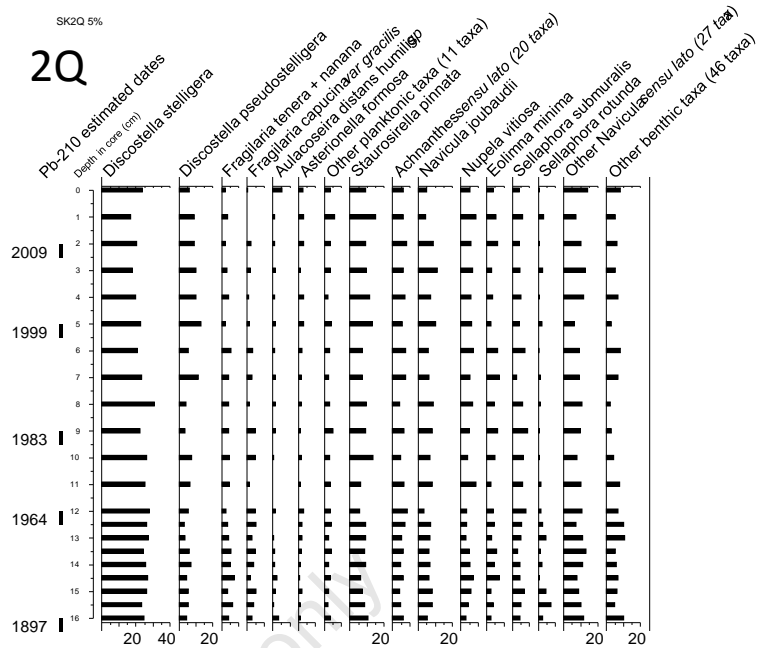
SK2F 5%

2F



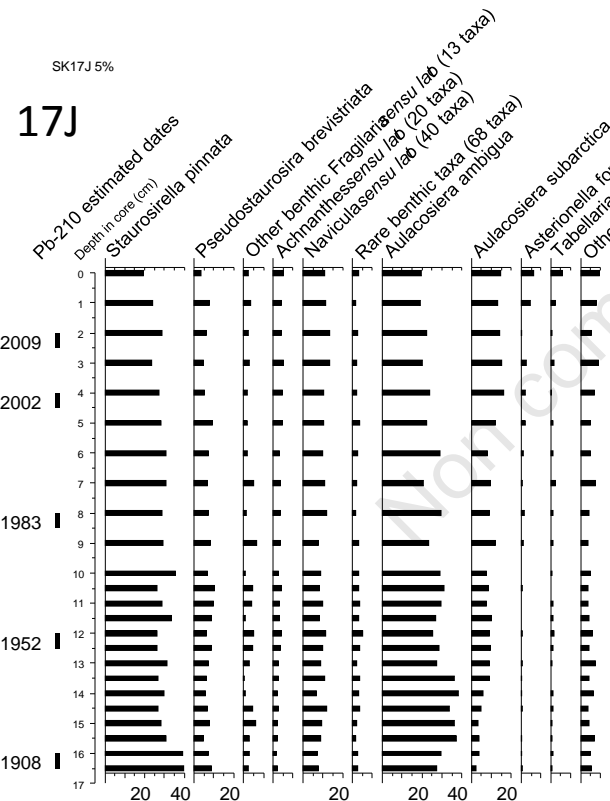
SK2Q 5%

2Q



SK17J 5%

17J



SK17V 5%

17V

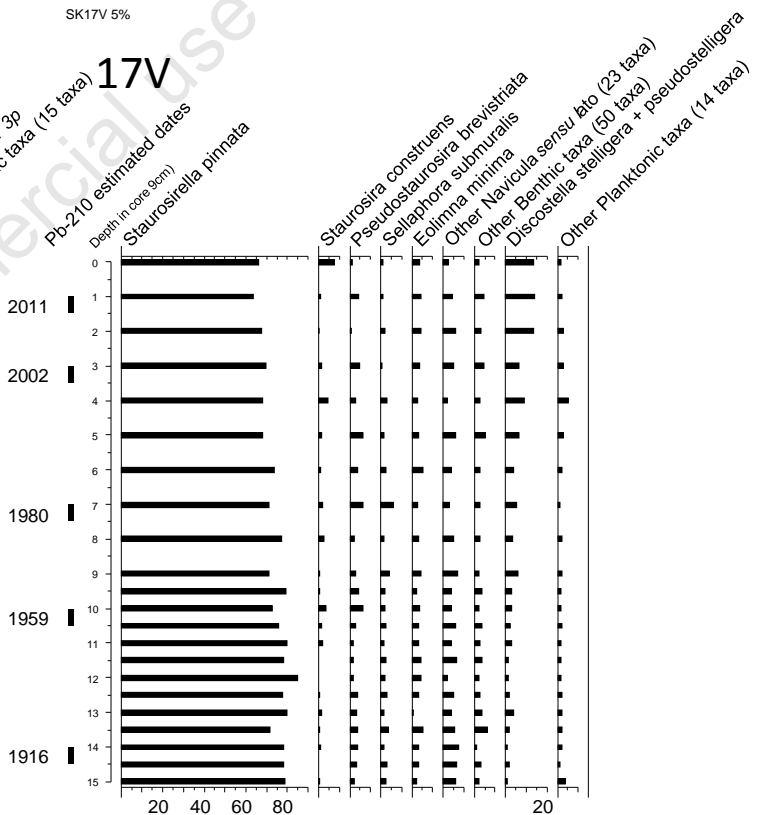
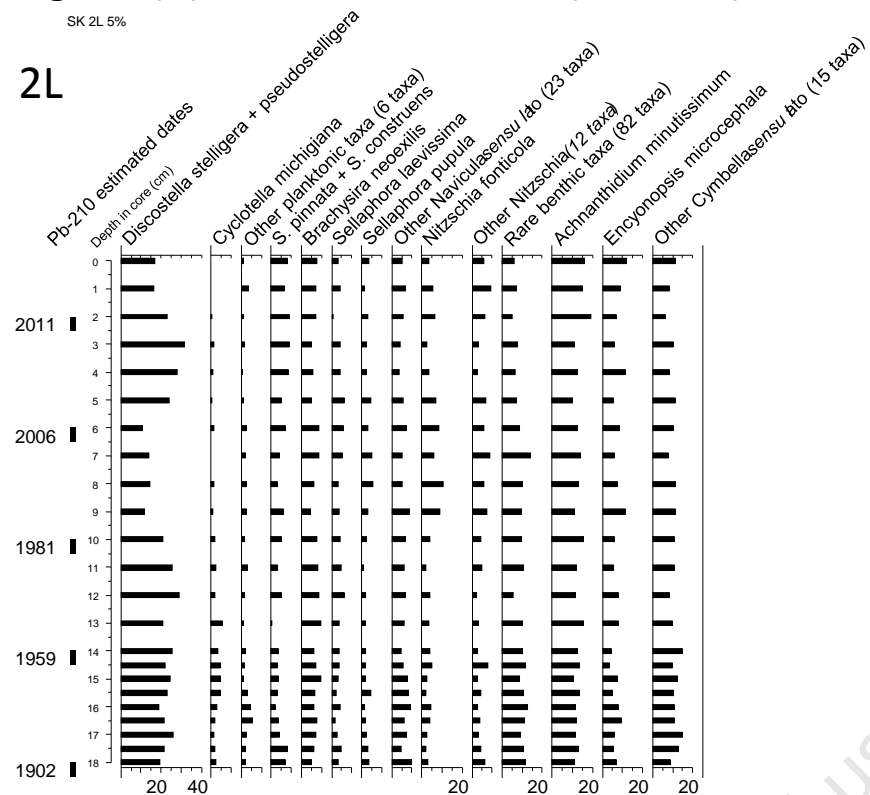




Fig. S5 (b) Reference P lakes (5% taxa)

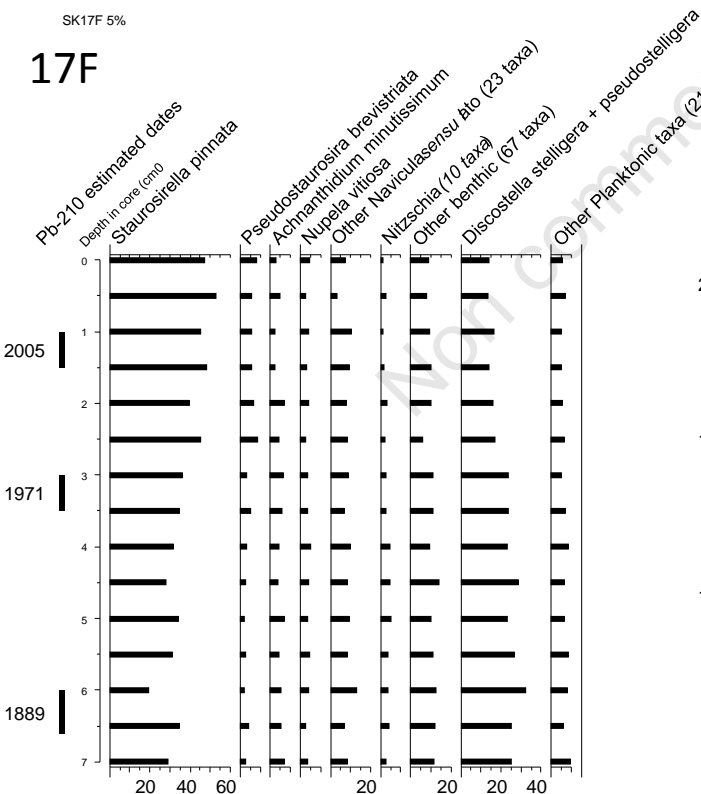
SK 2L 5%

2L



SK 17F 5%

17F



17P

SK 17P 5%

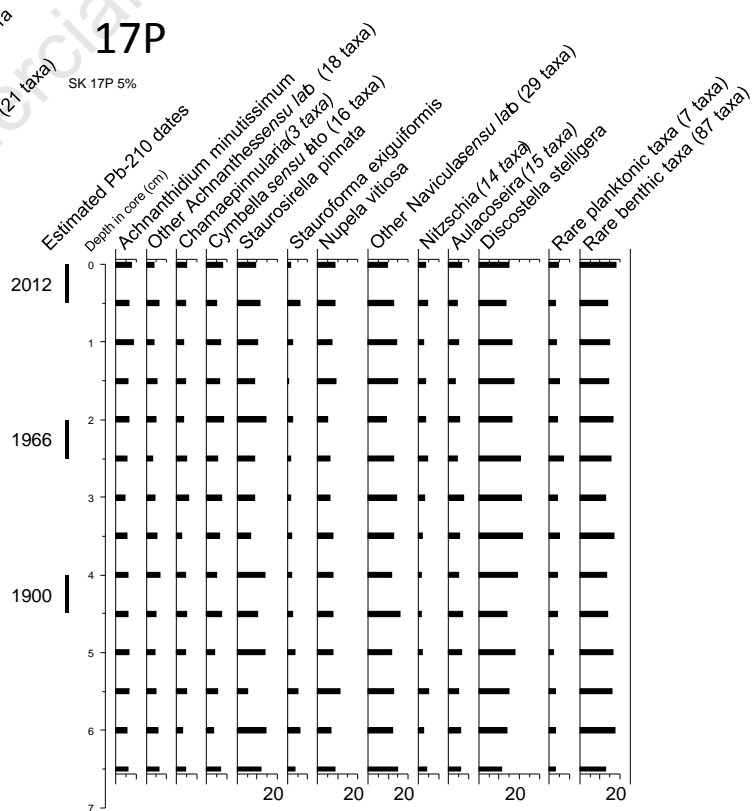
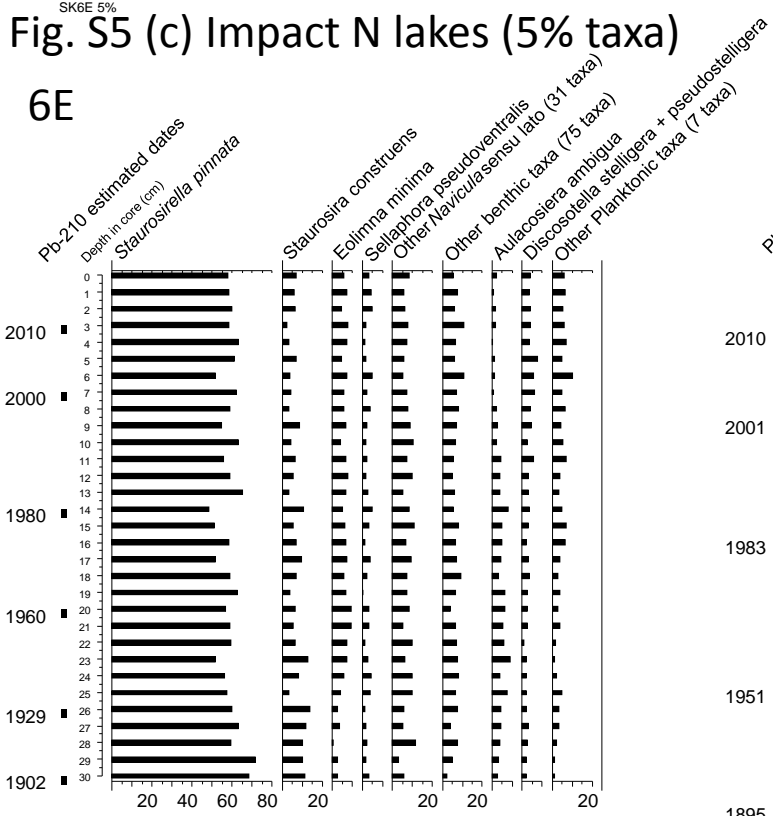
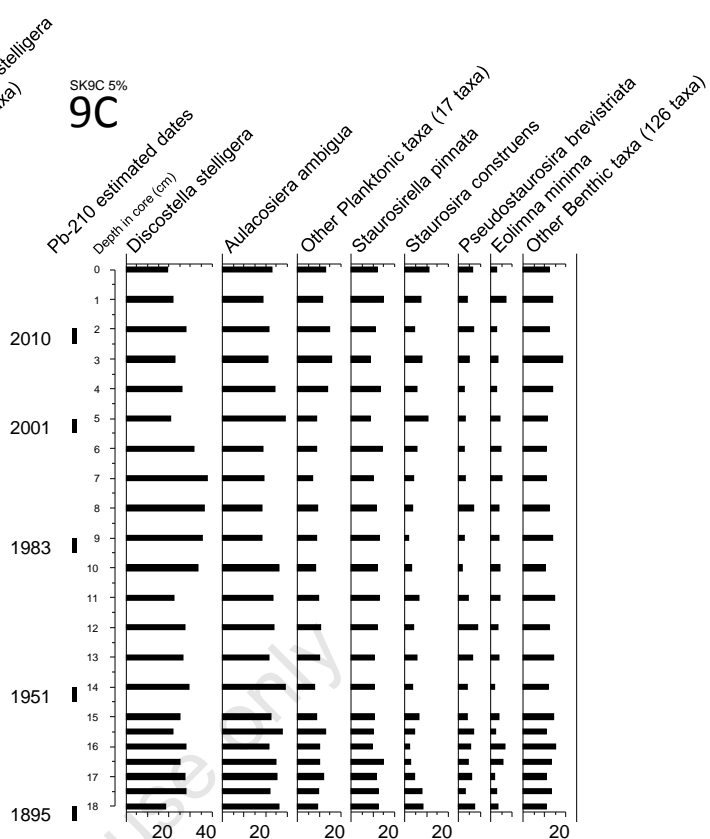


Fig. S5 (c) Impact N lakes (5% taxa)

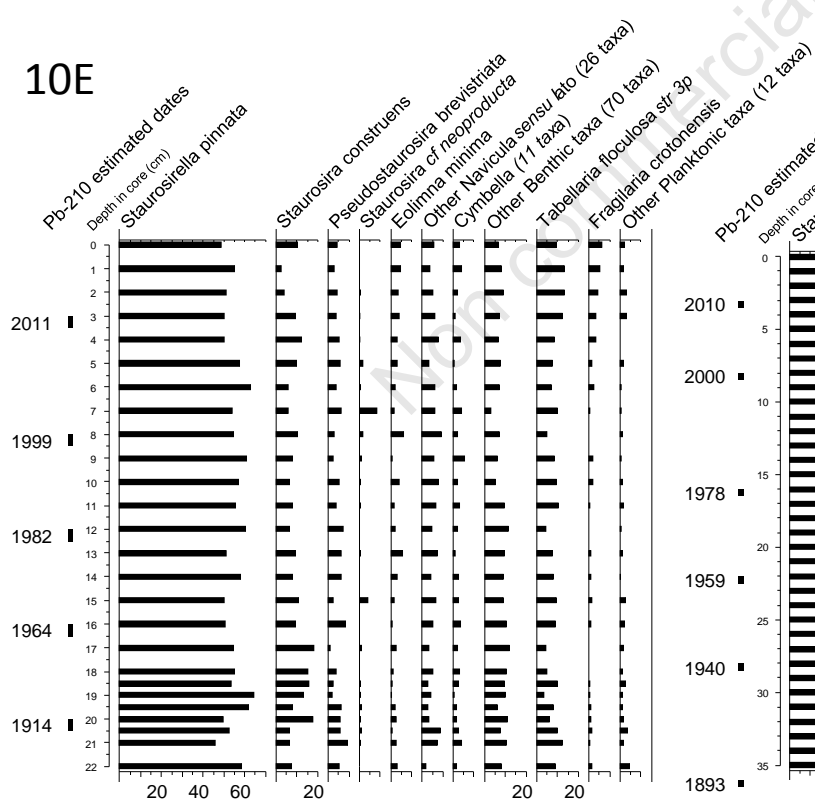
6E



9C



10E



10Y

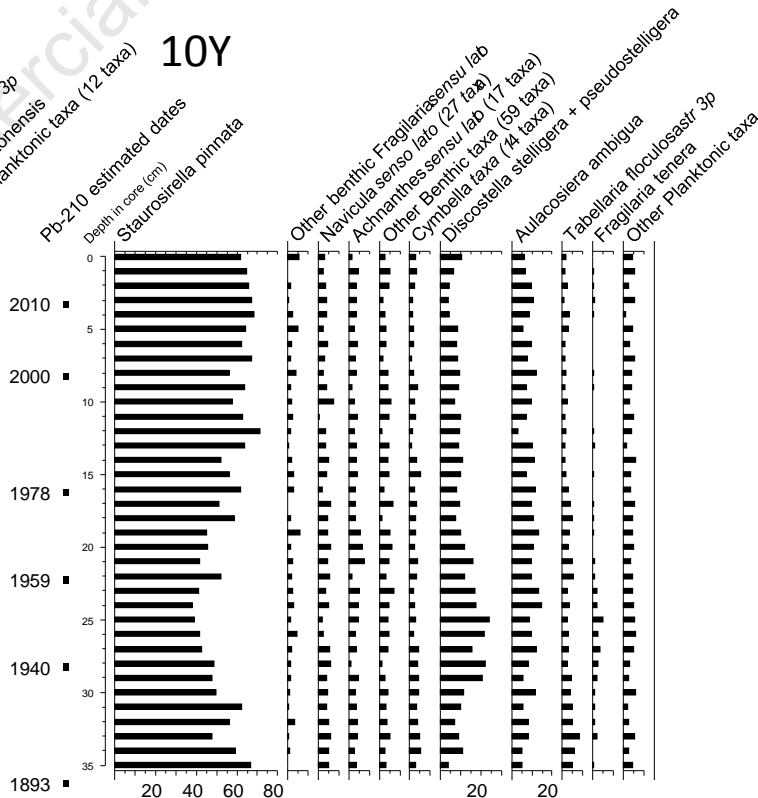
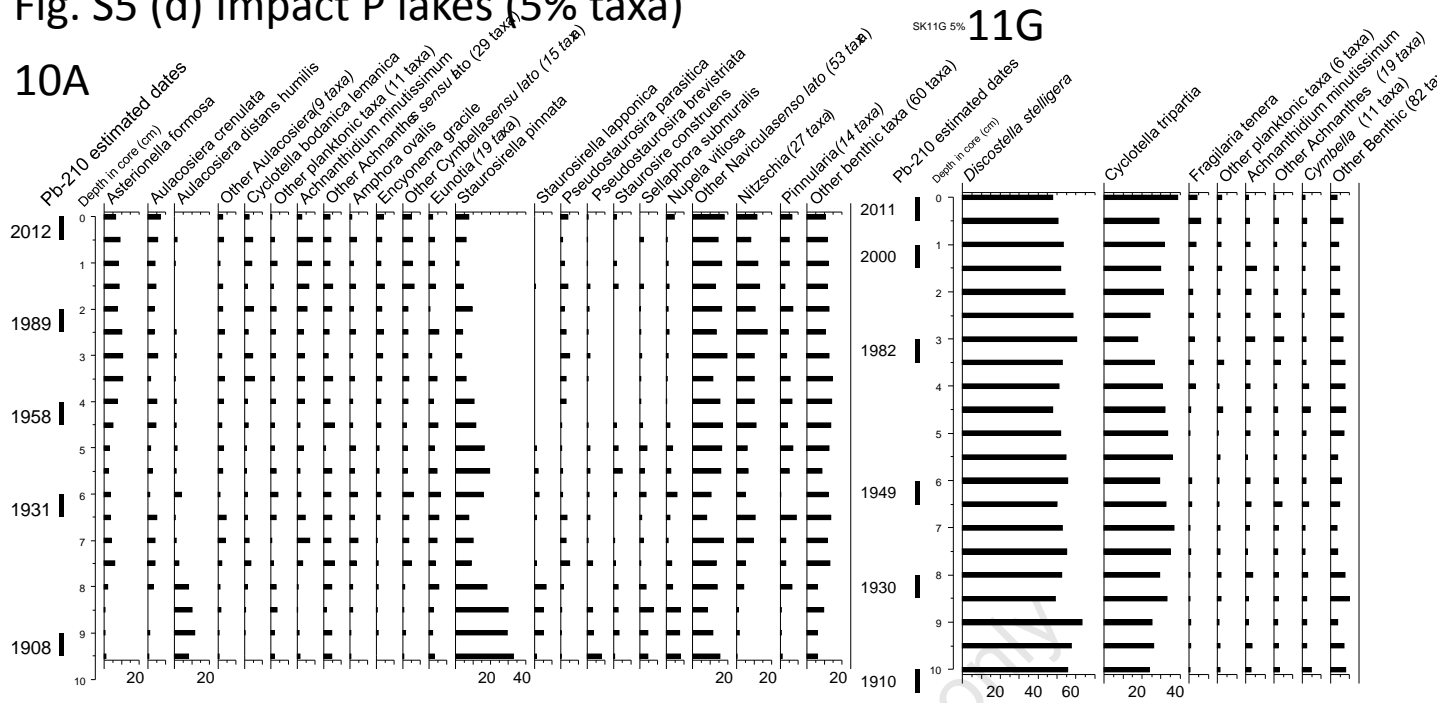


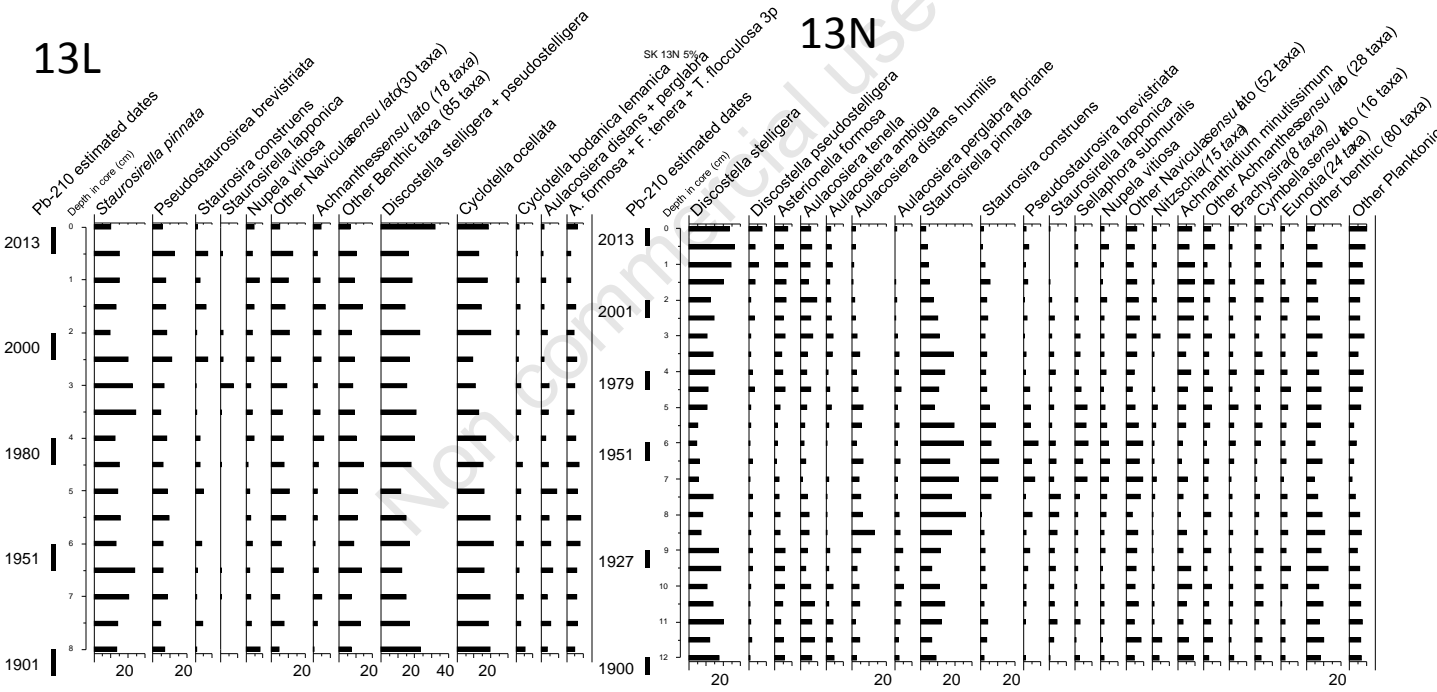
Fig. S5 (d) Impact P lakes (5% taxa)

10A



SK11G 5% 11G

13L



SK13N 5% 13N

13N



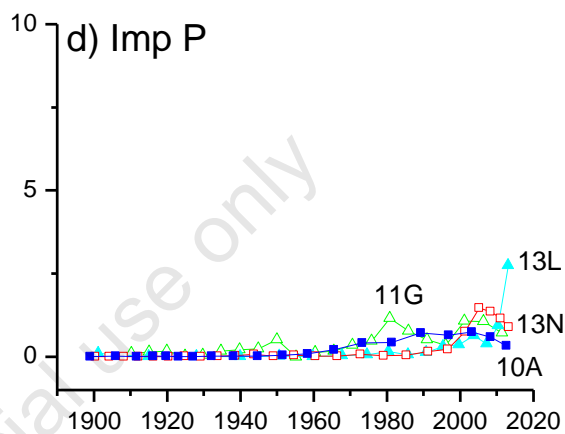
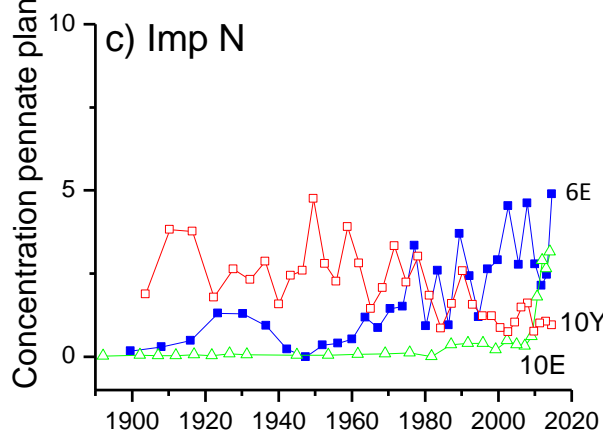
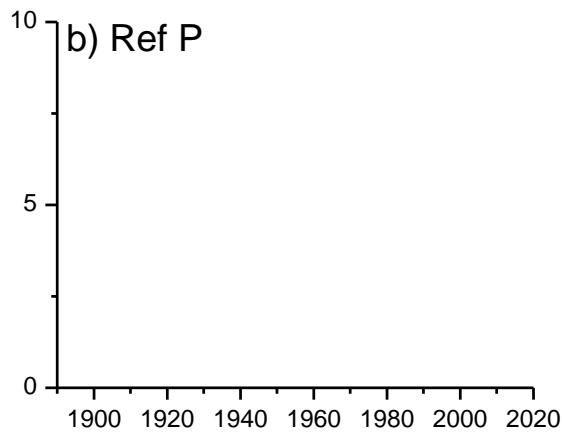
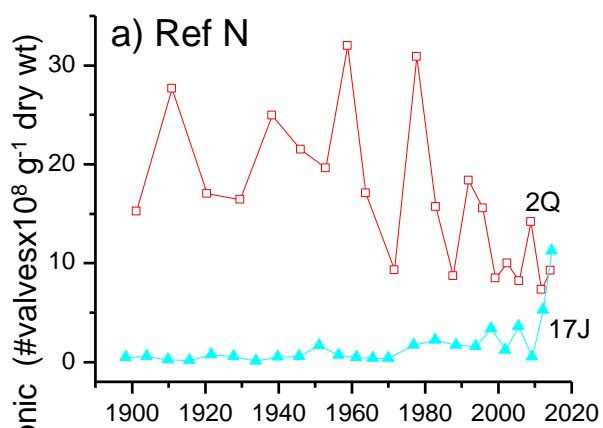
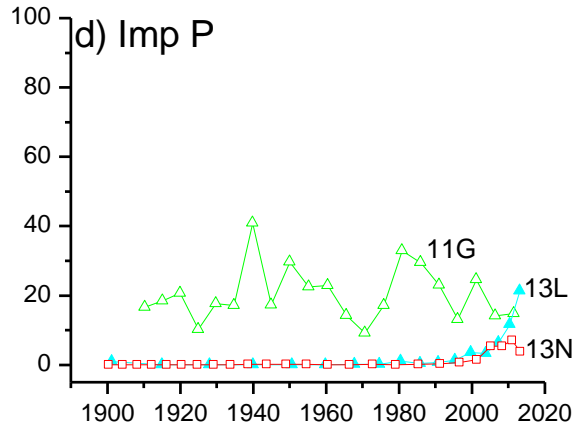
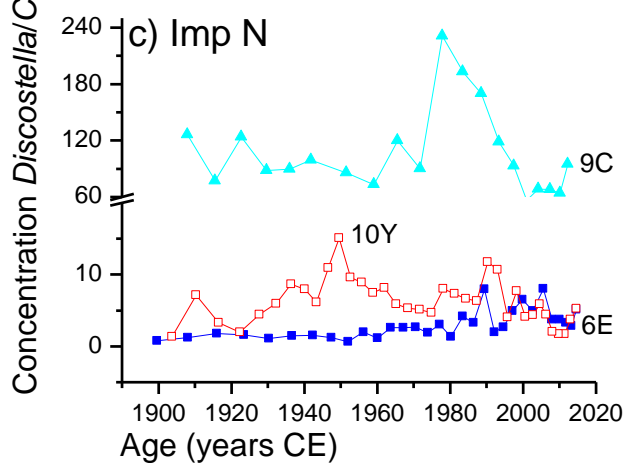
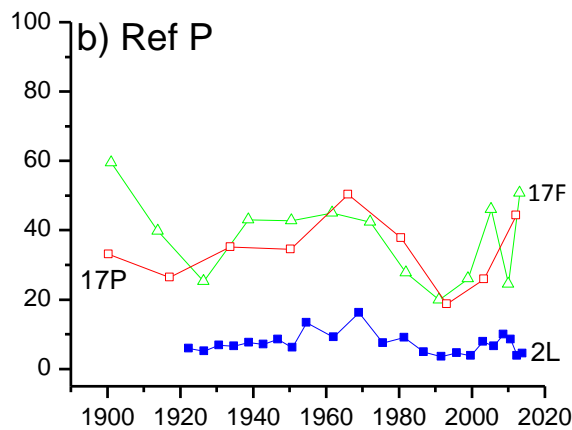
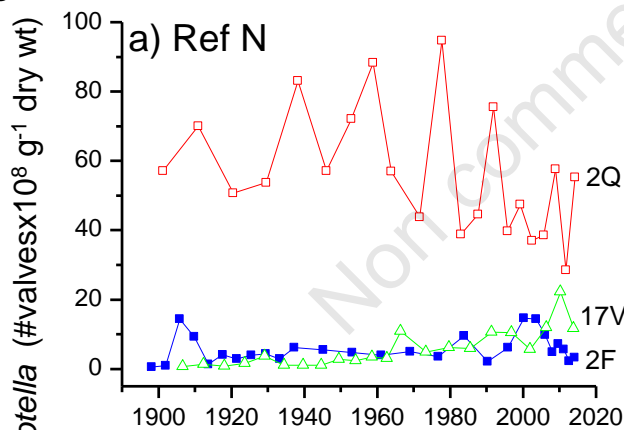


Fig. S7



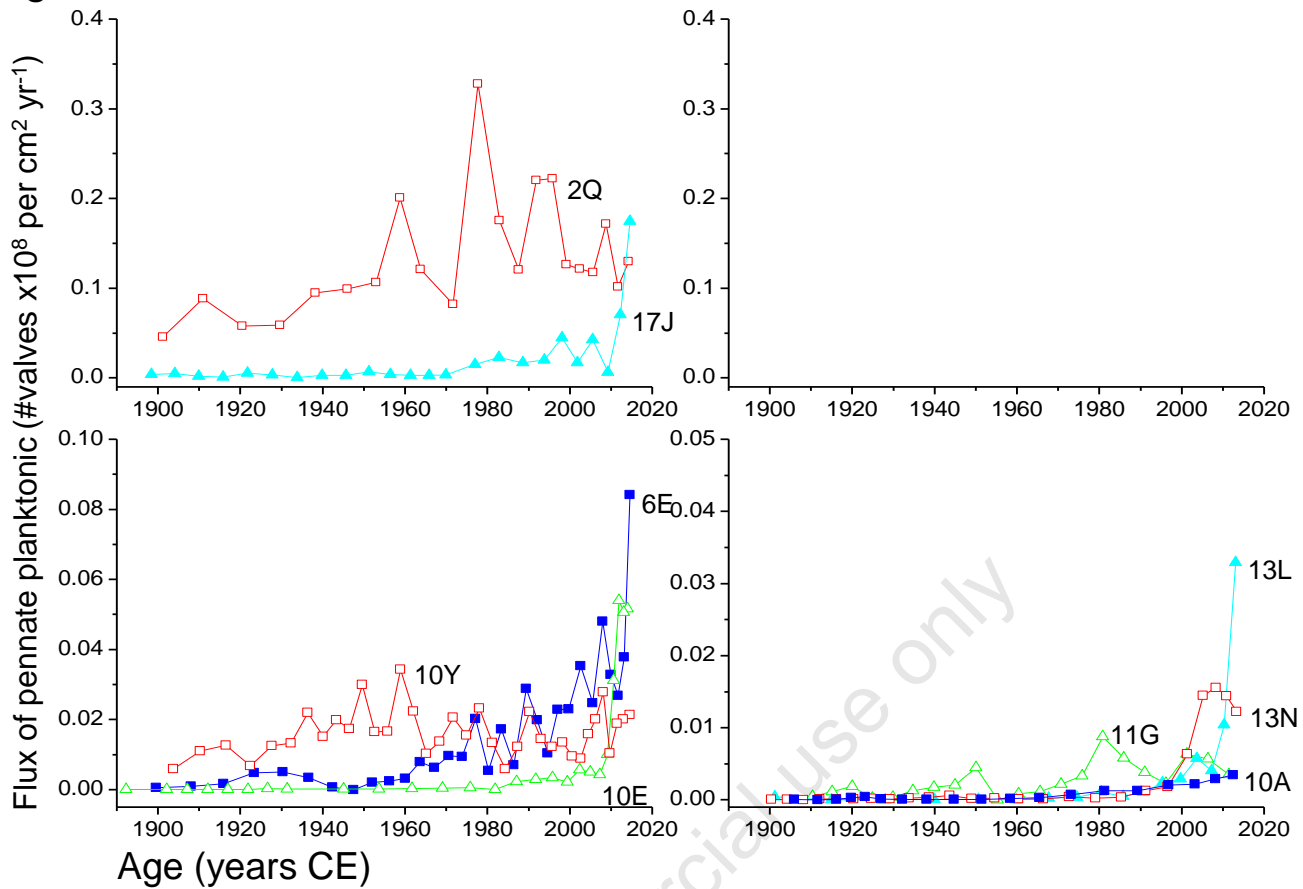
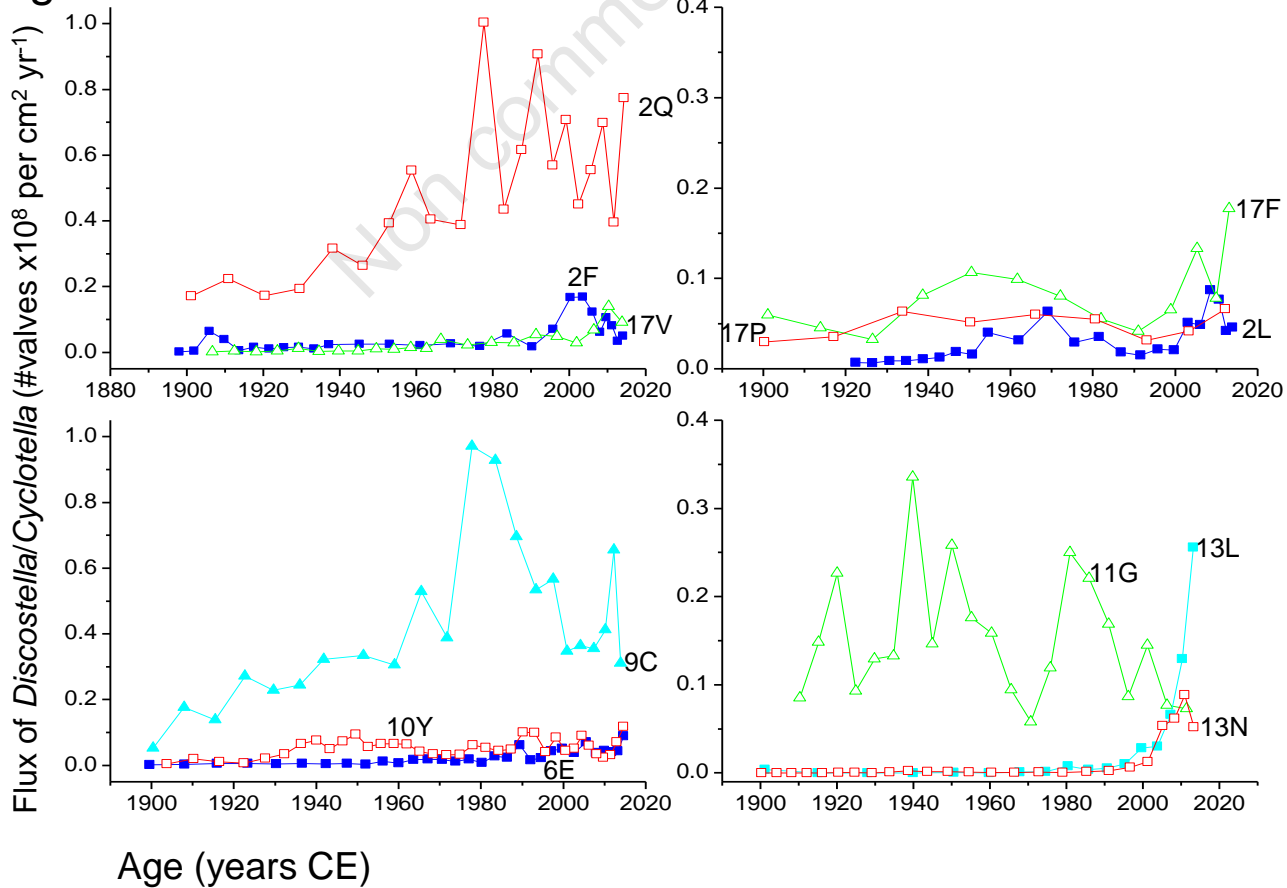
**Fig. S8****Fig. S9**

Table S1. Summary of major chemical variables for each of the sampling dates. Value of -999 represents no sampling.

Site	Date	DIN:TP	Chl $\alpha$ mg m <sup>-3</sup>	NH4_N $\mu\text{g L}^{-1}$	NO3_N $\mu\text{g L}^{-1}$	TN $\mu\text{g L}^{-1}$	TP $\mu\text{g L}^{-1}$	DOC mg L <sup>-1</sup>	DIC mg L <sup>-1</sup>	PC $\mu\text{g L}^{-1}$	Cl mg L <sup>-1</sup>	SO4 mg L <sup>-1</sup>	Si mg L <sup>-1</sup>	Alk mg L <sup>-1</sup>	SPCOND $\mu\text{S cm}^{-1}$	pH
<b>Reference N</b>																
2F	22-Sep-07	4.63	5.14	11	12	297	11	3.5	1.9	1316	0.17	0.99	1.89	8.4	17.72	6.78
2F	26-Sep-08	3.07	7.03	17	1	228	13	4	1.9	715	0.19	1.42	1.99	6.88	18.12	7.05
2F	5-Oct-09	3.76	3.76	15	2	316	10	4.1	1.6	874	0.16	1.21	1.95	6.32	17.4	6.93
2F	27-Sep-11	0.34	2.84	1	1	274	13	4.2	1.9	634	0.15	1.1	2.14	7.58	17.58	7
2Q	26-Sep-08	2.21	7.08	13	1	294	14	3.8	1.8	733	0.12	0.57	0.53	6.28	15.3	7.06
2Q	5-Oct-09	4.43	2.66	15	1	401	8	4.3	1.9	963	0.11	0.51	0.37	5.92	13.91	6.89
2Q	27-Sep-11	3.16	3.57	19	1	387	14	4.6	1.8	669	0.13	0.41	0.42	6.52	12.15	6.94
17J	27-Sep-07	2.61	7.11	19	1	250	17	2.8	2.1	456	0.22	0.59	4.59	7.4	17.63	6.78
17J	26-Sep-08	3.24	5.25	18	1	189	13	2.5	2	488	0.19	0.57	4.34	6.93	17.73	6.98
17J	5-Oct-09	3.24	-999.00	17	2	203	13	2.9	1.9	495	0.17	0.48	4.46	6.47	16.28	6.93
17J	2-Oct-11	5.38	6.34	25	9	198	14	2.4	2.1	389	0.22	0.56	4.5	7.27	16.22	7.04
17V	26-Sep-08	3.01	5.04	18	1	281	14	3.3	2	845	0.1	0.43	5.9	7.38	17.26	7.07
17V	5-Oct-09	2.21	-999.00	11	1	264	12	3.7	1.7	935	0.09	0.23	5.26	7.08	16.9	7.04
17V	2-Oct-11	3.18	5.72	22	1	325	16	3.3	2.4	965	0.12	0.29	5.54	8.09	16.64	7.12
<b>Reference P</b>																
2L	26-Sep-08	11.81	2.69	31	1	223	6	3.2	2.2	308	0.14	0.49	3.4	7.98	18.44	7.24
2L	5-Oct-09	19.49	2.02	43	1	323	5	3.9	1.9	634	0.13	0.3	3.21	7.22	15.87	7.07
2L	27-Sep-11	6.24	1.48	29	2	185	11	3.9	2.2	335	0.13	0.12	3.77	9.12	18.33	7.14
17F	27-Sep-07	8.86	2.83	14	2	284	4	4.1	2	539	0.13	0.33	1.9	7.9	18.53	6.94
17F	26-Sep-08	7.01	3.57	18	1	304	6	4.6	2.4	647	0.11	0.29	1.95	7.8	17.64	7.11
17F	5-Oct-09	11.07	-999.00	24	1	278	5	4.6	1.5	673	0.09	0.26	1.97	7.38	17.58	7.03
17F	2-Oct-11	4.23	3.09	20	1	330	11	4.2	1.8	660	0.1	0.2	1.75	8.03	16.64	7.09
17P	26-Sep-08	8.86	2.47	22	2	247	6	6.7	1.1	569	0.21	0.77	1.1	4.26	15.22	6.87
17P	5-Oct-09	9.81	-999.00	29	2	255	7	8.3	0.8	535	0.15	0.58	1.24	3.49	13.38	6.58
17P	2-Oct-11	4.87	1.47	21	1	257	10	6.4	1	410	0.21	0.74	0.91	4.78	13.7	6.85
<b>Impact N</b>																
6E	20-Sep-07	2.08	6.98	14	2	290	17	3.1	4	576	0.3	1.23	3.94	15.5	31.4	7.02
6E	26-Sep-08	0.74	5.87	4	1	310	15	3.5	4.5	628	0.09	1.2	4.32	15.61	34.8	7.4
6E	5-Oct-09	7.38	5.70	39	1	286	12	3	4.6	865	0.09	1.07	2.83	15.2	33.8	7.23
6E	28-Sep-11	3.12	6.03	30	1	372	22	4	4.9	743	0.09	0.66	4.06	19.75	33.7	7.41
9C	21-Sep-07	1.35	7.25	10	1	266	18	1.8	3.5	431	1.14	0.89	4.46	15	33	7.1
10E	24-Sep-07	2.77	3.90	14	1	329	12	3.5	4.4	470	0.19	0.89	2.98	18.1	35.5	7.26
10Y	24-Sep-07	3.32	6.81	17	1	532	12	4.7	4.3	685	0.18	0.53	2.08	17.2	33.7	7.15
<b>Impact P</b>																
10A	24-Sep-07	7.09	1.34	15	1	280	5	4.4	2.7	254	0.25	1.27	3.67	10.7	22.8	6.94
10A	26-Sep-08	8.58	2.83	26	5	307	8	4.5	2.7	365	0.1	1.02	3.7	9.59	23.8	7.13
10A	5-Oct-09	6.20	1.92	13	1	202	5	5.7	2.6	361	0.08	0.86	3.83	9.27	24.1	7.14
10A	29-Sep-11	11.07	4.15	19	1	194	4	3.9	2.4	205	0.12	0.93	3.7	10.33	23.6	7.22
11G	24-Sep-07	22.14	1.65	19	11	262	3	6.3	1.9	268	0.05	1.85	3.52	8.7	22.5	6.86
11G	5-Oct-09	29.34	1.98	52	1	213	4	7.4	1.5	550	0.11	1.36	3.52	6.62	21.3	6.98
11G	29-Sep-11	4.65	0.23	19	2	200	10	5.9	1.6	236	0.14	1.48	3.41	7.77	20.4	7.09
13L	26-Sep-08	8.30	2.27	14	1	120	4	1.3	2.3	281	0.41	0.9	3.71	6.6	17.3	6.98
13L	5-Oct-09	16.61	0.79	14	1	127	2	2	1.8	666	0.38	0.76	3.75	6.3	17.12	6.88
13L	29-Sep-11	8.30	1.57	14	1	88	4	1.5	1.6	194	0.35	0.82	3.51	6.78	17.07	7.04
13N	26-Sep-08	12.55	2.88	26	8	236	6	6.9	3	472	0.2	0.85	3.62	11.84	28.6	7.13
13N	5-Oct-09	16.61	3.54	26	4	301	4	7.9	2.5	527	0.17	0.6	3.38	10.5	26.8	7.02
13N	30-Sep-11	11.07	2.78	23	2	222	5	6.6	2.5	283	0.17	0.59	3.44	12.39	26.2	7.23

Table S2. Estimate of the degree of species turnover (DCA gradient length) in the diatom assemblages within each core.

Lake	Group	DCA gradient length
2F	Ref N	0.51
2Q	Ref N	0.59
17J	Ref N	0.95
17V	Ref N	0.55
2L	Ref P	0.56
17F	Ref P	0.76
17P	Ref P	0.71
6E	Imp N	0.63
9C	Imp N	0.5
10E	Imp N	0.63
10Y	Imp N	0.67
10A	Imp P	1.65
11G	Imp P	0.46
13L	Imp P	0.85
13N	Imp P	1.27

Non commercial use only